

Prepare for Rising Temperatures to Help Prevent Heat Illnesses

See page 3



Contents

COVER STORY

Prepare for Rising Temperatures to Help Prevent Heat Illnesses 3

POLICIES, PROCEDURES, AND FORMS UPDATES

Manuals

IMM Revision: Availability of Electronic USPS Delivery Confirmation International Service 5
 IMM Revision: Individual Country Listing for Australia 5
 IMM Revision: Individual Country Listing for Japan 6
 IMM Revision: Individual Country Listing for Uganda 6
 IMM Revision: Individual Country Listing for the United Kingdom of Great Britain and Northern Ireland 7

Handbooks

Handbook F-15 Revision: Travel Per Diem Rates 8

Publications

Publication 431 Revision: Changes to Post Office Box Service and Caller Service Fee Groups 8

ORGANIZATION INFORMATION

Address Management

Post Office Changes 9

Domestic Mail

Labeling List Changes 10

Environmental Management

Required Monthly Inspections for Aboveground Storage Tanks 35

Information Security

CyberSafe Training for Contractors Course Due by April 17 35

Stamp Services

Stamp Announcement 24-16: \$1 Floral Geometry Stamp 36

Pictorial Postmarks Announcement 37
 How to Order the First-Day-of-Issue Digital Color or Traditional Postmarks 38

PULL-OUT INFORMATION

Fraud

Missing, Lost, or Stolen U.S. Money Order Forms 13
 Missing, Lost, or Stolen Canadian Money Order Forms 20
 Verifying U.S. Postal Service Money Orders 22
 Counterfeit Canadian Money Order Forms 22
 Toll-Free Number Available to Verify Canadian Money Orders 22

Other Information

Overseas Military/Diplomatic Mail 23
 Thrift Savings Plan Fact Sheet 30
 Freely Associated States Restrictions 32

POSTAL BULLETIN 2023 ANNUAL INDEX

2023 Annual Index PB 22641 (1-11-24)

Find the latest in mail and delivery information and services offered by U.S. Postal® in the *Postal Bulletin* at about.usps.com/postal-bulletin

Mail Moment®

Cover Story

Prepare for Rising Temperatures to Help Prevent Heat Illnesses

The United States Postal Service® (USPS®) Heat Illness Prevention Program (HIPP) is designed to protect employees from heat illnesses by educating them on how to stay safe during hot weather. HIPP is triggered during the period of April 1 through October 31, and when weather reports issued by the National Weather Service (NWS) for a particular work location indicate that outdoor heat index temperatures are expected to exceed 80° Fahrenheit during the course of a workday or work shift. NWS weather reports can be obtained at weather.gov.

Rising heat index temperatures can put a person at risk for heat illnesses. When the body is unable to cool itself by sweating, heat illnesses such as heat stress, heat cramps, heat exhaustion, and heat stroke may occur. Symptoms range from mild and easily correctable to severe and potentially life-threatening.

High temperatures and humidity, direct sun or heat, limited air movement, physical exertion, poor physical condition, and some medicines are also contributing factors to heat illnesses.

Heat-related deaths are preventable by recognizing the symptoms and knowing what to do. Watch out for the following signs:

- Hot, dry skin or profuse sweating;
- Headaches;
- Confusion or dizziness;
- Nausea or vomiting;
- Rapid pulse;
- Muscle cramps;
- Weakness or fatigue; and
- Rashes.

If an employee experiences signs of heat-related illness, they must seek immediate medical assistance by calling 9-1-1.

Here are some proactive tips to help beat the heat:

- **Hydrate before, during, and after work.** Prevention is important — drink at least 8 ounces of water every 20 minutes.

- **Dress appropriately for the weather.** On warm days, wear light-colored, loose-fitting, and breathable clothing to keep your body temperature down.
- **Use the shade to stay cool.** When possible, use shaded areas to stay out of direct sunlight.

For more information about preventing heat illnesses, review the following resources:

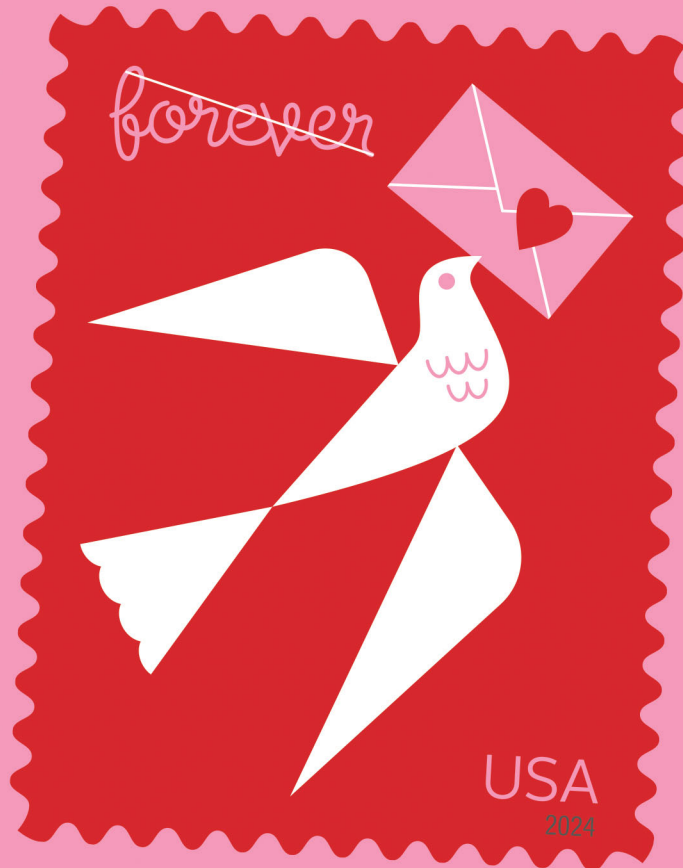
- HERO Safety talk: Heat Illness Prevention Program Safety Talk #2068;
- HERO Course: Heat Stress Recognition and Prevention Training;
- HIPP Materials and Resources — Safety and Health Management Tool (SHMT) Library — Awareness Campaigns — OSH Group Current — HIPP FY24;
- Safety Depends on Me Videos — MyHR — Safety Awareness Programs;
- Safety Resource Tools, MyHR — Workplace Safety — Heat Illness Prevention;
- Occupational Safety and Health Administration (OSHA) website: osha.gov/heat; and
- National Safety Council website: nsc.org/community-safety/safety-topics/seasonal-safety/summer-safety/heat.

eBuy+ HIPP material ordering information:

- **Vehicle Sticker:**
Label 128, May 2019
PSN 7690-18-000-4040
- **Employee Badge:**
PS Form 1280, May 2019
PSN 7530-18-000-4041
- **Heat Stress Recognition and Prevention Training DVD:**
PSN 6910-19-000-2563

— Occupational Safety and Health,
Human Resources, 3-21-24

Send Warm Sentiments with
Love 2024
Forever[®] Stamps



ON SALE JANUARY 12, 2024

Policies, Procedures, and Forms Updates

Manuals

IMM Revision: Availability of Electronic USPS Delivery Confirmation International Service

Effective March 24, 2024, the Postal Service™ will revise *Mailing Standards of the United States Postal Service*, International Mail Manual (IMM®), Exhibit 252.22, to reflect that Electronic USPS Delivery Confirmation International service (E-USPS DELCON INTL®) is available to Ukraine (as of March 24, 2024).

Mailing Standards of the United States Postal Service, International Mail Manual (IMM)

	*	*	*	*	*
2	Conditions for Mailing				
	*	*	*	*	*
250	First-Class Package International Service				
	*	*	*	*	*
252	Eligibility				
	*	*	*	*	*

252.2 Electronic USPS Delivery Confirmation International Service (E-USPS DELCON INTL)

* * * * *

252.22 Availability

* * * * *

Exhibit 252.22

Countries Accepting Electronic USPS Delivery Confirmation International Service (E-USPS DELCON INTL)

[Revise the list by adding the following entry in alphabetical order: Ukraine.]

* * * * *

Although effective March 24, 2024, the Postal Service will incorporate this revision into a later edition of the online IMM (after the one scheduled for April 1, 2024). The IMM is available via Postal Explorer® at pe.usps.com.

— Product Classification, Product Solutions, 3-21-24

IMM Revision: Individual Country Listing for Australia

Effective March 21, 2024, the Postal Service™ is revising the Individual Country Listing for Australia in *Mailing Standards of the United States Postal Service*, International Mail Manual (IMM®) to reflect an additional prohibition.

This revision is based on a formal request that Australia Post (the designated postal operator of Australia) made through the Universal Postal Union via *International Bureau Circular 192*, dated December 4, 2023, and subsequent email correspondence dated February 20, 2024.

Mailing Standards of the United States Postal Service, International Mail Manual (IMM)

	*	*	*	*	*
Individual Country Listings					
	*	*	*	*	*

Australia

Country Conditions for Mailing

Prohibitions

* * * * *

[Add a new entry in alphabetical order to read as follows:]

Untreated Wood.

* * * * *

Although effective March 21, 2024, the Postal Service will incorporate this revision into a later edition of the online IMM (after the one scheduled for April 1, 2024). The IMM is available via Postal Explorer® at pe.usps.com.

— Product Classification, Product Solutions, 3-21-24

IMM Revision: Individual Country Listing for Japan

Effective March 21, 2024, the Postal Service™ is revising the Individual Country Listing for Japan in *Mailing Standards of the United States Postal Service, International Mail Manual (IMM®)* to note a prohibition regarding the importation of firearms and weapons, and to revise the prohibition regarding narcotics.

These revisions are based on a formal request that the Ministry of Internal Affairs and Communications of Japan (MIC) made through the Universal Postal Union via *International Bureau Circular 33*, dated February 19, 2024.

Mailing Standards of the United States Postal Service, International Mail Manual (IMM)

* * * * *

Individual Country Listings

* * * * *

Japan

Country Conditions for Mailing

Prohibitions

* * * * *

[Add an entry beginning with “Firearms and weapons” to read as follows, and revise the entry beginning with

“Narcotics” to read as follows (adding “and other similar substances”):]

Firearms, the components and accessories of firearms, and weapons. Firearms (including handguns, pistols, machine guns, and rifles), the components and accessories of firearms, and other types of weapons (including daggers, swords, spears, and switch blade knives) may not be imported into Japan unless addressed to an appropriate organization and unless the intended recipient has received prior permission from the competent authority (such as the Public Safety Commission) in the prefecture in which that recipient resides.

* * * * *

Narcotics, psychotropic substances, and other similar substances.

Restrictions

* * * * *

[Remove the entry beginning with “Firearms” (a new entry about this topic has been added to Prohibitions).]

* * * * *

Although effective March 21, 2024, the Postal Service will incorporate these revisions into a later edition of the online IMM (after the one scheduled for April 1, 2024). The IMM is available via Postal Explorer® at pe.usps.com.

— Product Classification,
Product Solutions, 3-21-24

IMM Revision: Individual Country Listing for Uganda

Effective March 21, 2024, the Postal Service™ is revising the Individual Country Listing for Uganda in *Mailing Standards of the United States Postal Service, International Mail Manual (IMM®)* to include the addressee’s landline number, if possible, and any other relevant information on every item destined to Uganda.

This revision is based on a formal request that Posta Uganda (the designated postal operator of Uganda) made through the Universal Postal Union via *International Bureau Circular 29*, dated February 12, 2024.

Mailing Standards of the United States Postal Service, International Mail Manual (IMM)

* * * * *

Individual Country Listings

* * * * *

Uganda

Country Conditions for Mailing

* * * * *

Observations

[Revise item 3 to read as follows:]

- On every item, Posta Uganda (the designated postal operator of Uganda) requests that the mailer include the sender’s telephone number and email address, and the addressee’s landline number and mobile telephone number (if possible), email address (if available), the house or apartment number (when applicable), and any other relevant information. This contact information assists Posta Uganda with delivery.

* * * * *

Although effective March 21, 2024, the Postal Service will incorporate this revision into a later edition of the online IMM (after the one scheduled for April 1, 2024). The IMM is available via Postal Explorer® at pe.usps.com.

— Product Classification,
Product Solutions, 3-21-24

IMM Revision: Individual Country Listing for the United Kingdom of Great Britain and Northern Ireland

Effective March 21, 2024, the Postal Service™ is revising the Individual Country Listing for the United Kingdom of Great Britain and Northern Ireland in *Mailing Standards of the United States Postal Service*, International Mail Manual (IMM®) to note that blades are prohibited to the United Kingdom of Great Britain and Northern Ireland.

This revision is based on a formal request that Royal Mail (including Parcelforce) (the designated postal operator of the United Kingdom of Great Britain and Northern Ireland) made through the Universal Postal Union via *International Bureau Circular 32*, dated February 19, 2024.

Mailing Standards of the United States Postal Service, International Mail Manual (IMM)

* * * * *

Individual Country Listings

* * * * *

United Kingdom of Great Britain and Northern Ireland

Country Conditions for Mailing

* * * * *

Prohibitions

[Add an entry in alphabetical order to read as follows and remove the entry beginning with “Switchblade knives” (the information from that entry is included in the added entry):]

Bladed articles (as defined by the Criminal Justice Act 1988) and bladed products (as defined by the Offensive Weapons Act 2019). Such items include, but are not limited to, knife blades, kitchen knives (regardless of size or design), bread knives, knives that can be used for hobbies and trades (regardless of whether they are marketed as knives, such as utility knives and snap-off cutters, also called box cutters), gardening and farming tools that have a blade, trade tools that could commonly be described as knives, butcher’s knives (including meat cleavers), cutlery knives, scissors with sharp edges, sporting equipment with blades, replica and antique knives (including those used for re-enactment purposes), handmade and bespoke knives, open razors (where the blade is exposed), axes, swords, survival knives, machetes, switchblade knives (also known as flick knives), and gravity knives.

* * * * *

Although effective March 21, 2024, the Postal Service will incorporate this revision into a later edition of the online IMM (after the one scheduled for April 1, 2024). The IMM is available via Postal Explorer® at pe.usps.com.

— Product Classification,
Product Solutions, 3-21-24

Handbooks

Handbook F-15 Revision: Travel Per Diem Rates

Effective February 1, 2024, the Postal Service™ revised Handbook F-15, *Travel and Relocation*, to update the travel per diem rates listed in Appendix A.

Handbook F-15, *Travel and Relocation*

* * * * *

Appendix A — Rates

* * * * *

A-2 Travel Per Diem Rates

[Revise the section to read as follows:]

The per diem rates for domestic travel *within* the continental United States are available on the General Services Administration (GSA) website at gsa.gov/perdiem.

Note: Travel to Norman, Oklahoma, follows the current standard location daily rate established by GSA.

The per diem rates for domestic travel *outside* the continental United States (OCONUS — such as to Alaska, Hawaii, Puerto Rico, and U.S. possessions) follow the rates set by the Department of Defense (DoD). Calculate the per diem rates for these locations using the Local Meals and Local Incidentals rates provided by the DoD chart that is accessible through the DoD link on the GSA website noted above.

The per diem rates for foreign locations follow the rates set by the Department of State (DoS) chart that is accessible through the DoS link on the GSA website noted above.

It is important that USPS® employees adhere to these guidelines and use the appropriate resources to determine per diem rates. By doing so, travelers can ensure that they are accurately reimbursed for their M&IE while on official travel.

* * * * *

The Postal Service will incorporate these revisions into a later edition of online Handbook F-15, which will be available on the PolicyNet website:

- Go to blue.usps.gov.
- In the left-hand column, click *Essential Links*, and then click *PolicyNet*.
- Go to the right-hand side under “Published Forms and Directives.”
- Click *Handbooks*.

The direct URL for the Postal Service PolicyNet website is blue.usps.gov/cpim.

— Compensation and Benefits,
Human Resources, 3-21-24

Publications

Publication 431 Revision: Changes to Post Office Box Service and Caller Service Fee Groups

Effective March 21, 2024, Publication 431, *Post Office Box Service and Caller Service Fee Groups*, is revised to include the following changes.

Publication 431, *Post Office Box Service and Caller Service Fee Groups*

* * * * *

[Delete the following entries:]

ZIP Code	Fee Group
25287	5
25410	5
88031B	34

* * * * *

The online version of Publication 431 is dated July 2013. Publication 431 is currently available on the Postal Service™ PolicyNet website (blue.usps.gov/cpim):

- Go to blue.usps.gov.
- In the left-hand column, click *Essential Links*, and then click *PolicyNet*.
- Go to the right-hand side under “Published Forms and Directives.”
- Click *Publications*.

Offices with WebBATS Manager/Supervisor access can view current Publication 431 information by going to the WebBATS Edit Facility Information page, as follows:

1. Go to the WebBATS main menu, and select Utility> Facility>Edit Facility option.
2. View the Fee Group field on the Edit Facility Information page.

— Post Office Operations,
Retail and Post Office Operations, 3-21-24

Organization Information

Address Management

Post Office Changes

The table shown here includes Post Offices which have been suspended for years. Customers in these communities are being served by nearby offices. The listings in this table represent the administrative action of the Postal Service™ officially closing these offices.

Old/ New	Finance No.	ZIP Code	State	P. O. Name	County	Station/ Branch/Unit	Unit Type	Effective Date	Comments
Old New	03-6401 03-2738	85141 85141	AZ AZ	Picacho Eloy	Pinal Pinal	Main Office Picacho	Post Office Place Name	12/11/2023 03/07/2024	Post Office™ discontinued. Retain ZIP Code™. Establish a Place Name. Continue to use Picacho, AZ 85141 as the last line of address.
Old New	05-6786 05-6786	94102 94102	CA CA	San Francisco San Francisco	San Francisco San Francisco	Civic Ctr PO Box Unit Main Office	Classified Station Post Office	12/11/2023 03/07/2024	Classified Station discontinued. Retain ZIP Code. Continue to use San Francisco, CA 94102 as the last line of address.
Old New	05-7416 05-6750	94080 94080	CA CA	South San Francisco San Bruno	San Mateo San Mateo	Main Office South San Francisco	Post Office Place Name	12/11/2023 03/07/2024	Post Office discontinued. Retain ZIP Code. Establish a Place Name. Continue to use South San Francisco, CA 94080 as the last line of address.
Old New	18-5553 18-2943	50562 50562	IA IA	Mallard Emmetsburg	Palo Alto Palo Alto	Main Office Mallard	Post Office Place Name	12/11/2023 03/07/2024	Post Office discontinued. Retain ZIP Code. Establish a Place Name. Continue to use Mallard, IA 50562 as the last line of address.
Old New	27-5902 27-3497	38765 38765	MS MS	Panther Burn Hollandale	Sharkey Sharkey	Main Office Panther Burn	Post Office Place Name	12/11/2023 03/07/2024	Post Office discontinued. Retain ZIP Code. Establish a Place Name. Continue to use Panther Burn, MS 38765 as the last line of address.
Old New	33-8745 33-1785	07881 07881	NJ NJ	Wallpack Center Columbia	Sussex Sussex	Main Office Wallpack Center	Post Office Place Name	12/11/2023 03/07/2024	Post Office discontinued. Retain ZIP Code. Establish a Place Name. Continue to use Wallpack Center, NJ 07881 as the last line of address.
Old New	35-9350 35-9350	10604 10604	NY NY	White Plains White Plains	Westchester Westchester	West Harrison West Harrison	Classified Branch Place Name	12/11/2023 03/07/2024	Classified Branch discontinued. Retain ZIP Code. Establish a Place Name. Continue to use West Harrison, NY 10604 as the last line of address.

Old/ New	Finance No.	ZIP Code	State	P. O. Name	County	Station/ Branch/Unit	Unit Type	Effective Date	Comments
Old	41-6608	15208	PA	Pittsburgh	Allegheny	Homewood	Classified Station	12/11/2023	
New	41-6608	15208	PA	Pittsburgh	Allegheny	Main Office	Post Office	03/07/2024	Classified Station discontinued. Retain ZIP Code. Continue to use Homewood, PA 15208 as the last line of address.
Old	48-6185	77867	TX	Mumford	Robertson	Main Office	Post Office	12/11/2023	
New	48-3955	77867	TX	Hearne	Robertson	Mumford	Place Name	03/07/2024	Post Office discontinued. Retain ZIP Code. Establish a Place Name. Continue to use Mumford, TX 77867 as the last line of address.

— Address Management, Addressing and Geospatial Technology, 3-21-24

Domestic Mail

Labeling List Changes

Effective April 1, 2024, the Postal Service™ will revise Labeling List(s) L001, L002, L004, L005, L007, L008, L012, L014, L201, L606, L607, and L801 to reflect changes in mail processing operations. Mailers are expected to label according to these revised lists for mailings inducted on or after the April 1, 2024, effective date through the May 31, 2024, expiration date.

Note: Due to the extensive number of changes to the following Labeling List, the changes will not be published in this Postal Bulletin:

- L201 Periodicals Origin Split and First-Class Mail Mixed ADC/AADC

To access the L201 Labeling List changes, as well as a complete listing of EELs changes in Postal Pro (effective April 1, 2024), visit postalpro.usps.com/operations/labeling-lists/changes-april-2024.

Labeling Lists

L001 5-Digit Scheme — Periodicals, Standard Mail, and Package Services Flats and Irregular Parcels

Changes

Column A Destination ZIP Codes	Column B Label Container To (Change From)	Column B Label Container To (Change To)
91325	NORTHRIDGE CA 91324	NORTHRIDGE CA 91325
91330	NORTHRIDGE CA 91324	NORTHRIDGE CA 91325

* * * * *

Deleted

Column A Destination ZIP Codes	Column B Label Container To (Deleted From)
06749	WATERBURY CT 06701
91326	NORTHRIDGE CA 91326
91327	NORTHRIDGE CA 91326
91387	CANYON COUNTRY CA 91351

L002 3-Digit ZIP Code Prefix Matrix

Changes

3-Digit ZIP Code Prefix	Column A 3-Digit Destinations Label To (Change From)	Column B 3-Digit/Scheme Destinations Label To (Change From)	Column C SCF Destinations Label To (Change From)	Column A 3-Digit Destinations Label To (Change To)	Column B 3-Digit/Scheme Destination Label To (Change To)	Column C SCF Destinations Label To (Change To)
770	NORTH HOUSTON TX 770	NORTH HOUSTON TX 770	SCF NORTH HOUSTON TX 773	SOUTH HOUSTON TX 770	SOUTH HOUSTON TX 770	SCF SOUTH HOUSTON TX 774
772	NORTH HOUSTON TX 772	NORTH HOUSTON TX 772	SCF NORTH HOUSTON TX 773	SOUTH HOUSTON TX 772	SOUTH HOUSTON TX 772	SCF SOUTH HOUSTON TX 774
774	NORTH HOUSTON TX 774	NORTH HOUSTON TX 774	SCF NORTH HOUSTON TX 773	SOUTH HOUSTON TX 774	SOUTH HOUSTON TX 774	SCF SOUTH HOUSTON TX 774
832	SALT LAKE CITY UT 832	SALT LAKE CITY UT 832	SCF BOISE ID 836	BOISE ID 832	BOISE ID 832	SCF BOISE ID 836
834	SALT LAKE CITY UT 834	SALT LAKE CITY UT 834	SCF BOISE ID 836	BOISE ID 834	BOISE ID 834	SCF BOISE ID 836

* * * * *

L004 3-Digit ZIP Code Prefix Groups – ADC Sortation

Changes

Column A 3-Digit ZIP Code Prefix Group	Column B Label To (Change From)	Column B Label To (Change To)
770	ADC NORTH HOUSTON TX 773	ADC SOUTH HOUSTON TX 774
772	ADC NORTH HOUSTON TX 773	ADC SOUTH HOUSTON TX 774
774	ADC NORTH HOUSTON TX 773	ADC SOUTH HOUSTON TX 774
*	*	*

L005 3-Digit ZIP Code Prefix Groups – SCF Sortation

Changes

Column A Destination ZIP Codes	Column B Label To (Change From)	Column B Label To (Change To)
770	SCF NORTH HOUSTON TX 773	SCF SOUTH HOUSTON TX 774
772	SCF NORTH HOUSTON TX 773	SCF SOUTH HOUSTON TX 774
774	SCF NORTH HOUSTON TX 773	SCF SOUTH HOUSTON TX 774
*	*	*

L007 5-Digit Scheme – Periodicals, Standard Mail, and Package Services Flats in Bundles

* * * * *

Newly Added

Column A Destination ZIP Codes	Column B Label Container To (Added To)
46701	ALBION IN 46701
46702	ANDREWS IN 46702
46703	ANGOLA IN 46703
46705	ANDREWS IN 46702
46706	AUBURN IN 46706
46710	ANDREWS IN 46702
46711	AUBURN IN 46706
46714	AUBURN IN 46706
46721	ALBION IN 46701
46723	AUBURN IN 46706
46725	ANGOLA IN 46703
46731	ANDREWS IN 46702
46732	ANDREWS IN 46702
46733	ANGOLA IN 46703
46737	ALBION IN 46701
46738	AUBURN IN 46706
46740	ALBION IN 46701
46741	ANDREWS IN 46702
46742	ALBION IN 46701
46743	ANDREWS IN 46702
46746	ALBION IN 46701
46747	ANDREWS IN 46702
46748	ANDREWS IN 46702
46750	AUBURN IN 46706
46755	AUBURN IN 46706
46761	ALBION IN 46701

Column A Destination ZIP Codes	Column B Label Container To (Added To)
46763	ANGOLA IN 46703
46765	ALBION IN 46701
46766	ANDREWS IN 46702
46767	ALBION IN 46701
46770	ANDREWS IN 46702
46772	ANDREWS IN 46702
46773	ALBION IN 46701
46774	AUBURN IN 46706
46777	ALBION IN 46701
46779	ANDREWS IN 46702
46781	ANDREWS IN 46702
46783	ALBION IN 46701
46784	ANDREWS IN 46702
46785	ANDREWS IN 46702
46787	ANDREWS IN 46702
46788	ANDREWS IN 46702
46792	ALBION IN 46701
46793	ANDREWS IN 46702
46795	ALBION IN 46701
46797	ANDREWS IN 46702
46798	ANDREWS IN 46702
46802	FORT WAYNE IN 46802
46803	FORT WAYNE IN 46802
46804	FORT WAYNE IN 46804
46805	FORT WAYNE IN 46805
46806	FORT WAYNE IN 46805
46807	FORT WAYNE IN 46805
46808	FORT WAYNE IN 46802
46809	FORT WAYNE IN 46805
46814	FORT WAYNE IN 46804
46815	FORT WAYNE IN 46802
46816	FORT WAYNE IN 46805
46818	FORT WAYNE IN 46802
46819	FORT WAYNE IN 46805
46825	FORT WAYNE IN 46804
46835	FORT WAYNE IN 46802
46845	FORT WAYNE IN 46804
46885	FORT WAYNE IN 46802
46895	FORT WAYNE IN 46805
46896	FORT WAYNE IN 46805
46898	FORT WAYNE IN 46802
46899	FORT WAYNE IN 46805

* * * * *

L008 3-Digit Scheme – Periodicals, Standard Mail, and BPM Flats in Bundles

Changes

Column A Destination ZIP Codes	Column B Label Bundle To (Change From)	Column B Label Bundle To (Change To)
770	HOUSTON TX 770	SOUTH HOUSTON TX 774
772	HOUSTON TX 770	SOUTH HOUSTON TX 774
774	NORTH HOUSTON TX 773	SOUTH HOUSTON TX 774
776	BEAUMONT TX 776	NORTH HOUSTON TX 773
777	BEAUMONT TX 776	NORTH HOUSTON TX 773

* * * * *

L012 5-Digit ZIP Scheme Combination**Changes**

Column A Destination ZIP Codes	Column B Label Container To (Change From)	Column B Label Container To (Change To)
30124	ADAIRSVILLE GA 30103	CAVE SPRING GA 30124
30125	ADAIRSVILLE GA 30103	CAVE SPRING GA 30124
30297	PEACHTREE CITY GA 30269	FOREST PARK GA 30297
30298	PEACHTREE CITY GA 30269	FOREST PARK GA 30297
30307	ATLANTA GA 30306	ATLANTA GA 30307
30341	ATLANTA GA 30340	ATLANTA GA 30341
30344	ATLANTA GA 30345	ATLANTA GA 30344
30360	ATLANTA GA 30362	ATLANTA GA 30340
30362	ATLANTA GA 30362	ATLANTA GA 30340
30364	ATLANTA GA 30345	ATLANTA GA 30344
30366	ATLANTA GA 30362	ATLANTA GA 30341
31106	ATLANTA GA 31139	ATLANTA GA 30306
31107	ATLANTA GA 31139	ATLANTA GA 30307
31119	ATLANTA GA 31139	ATLANTA GA 30319
31126	ATLANTA GA 31139	ATLANTA GA 30305
31145	ATLANTA GA 31139	ATLANTA GA 30345
31146	ATLANTA GA 31139	ATLANTA GA 30338
31150	ATLANTA GA 31139	ATLANTA GA 30338
31156	ATLANTA GA 31139	ATLANTA GA 30338
94086	SUNNYVALE CA 94085	SUNNYVALE CA 94086
94087	SUNNYVALE CA 94087	SUNNYVALE CA 94085
94088	SUNNYVALE CA 94085	SUNNYVALE CA 94086
94089	SUNNYVALE CA 94087	SUNNYVALE CA 94086

* * * * *

Deleted

Column A Destination ZIP Codes	Column B Label Container To (Deleted From)
06749	NAUGATUCK CT 06770
30103	ADAIRSVILLE GA 30103
30104	ADAIRSVILLE GA 30103
30105	ADAIRSVILLE GA 30103
30107	KENNESAW GA 30152
30108	DOUGLASVILLE GA 30134
30110	BREMEN GA 30110
30113	BREMEN GA 30110
30115	CANTON GA 30115
30122	POWDER SPRINGS GA 30127
30127	POWDER SPRINGS GA 30127
30137	ADAIRSVILLE GA 30103
30139	ADAIRSVILLE GA 30103
30141	CANTON GA 30115
30143	WOODSTOCK GA 30189
30145	KINGSTON GA 30145
30147	KINGSTON GA 30145
30153	KINGSTON GA 30145
30170	DOUGLASVILLE GA 30134
30171	KINGSTON GA 30145
30173	KINGSTON GA 30145
30175	WOODSTOCK GA 30189

Column A Destination ZIP Codes	Column B Label Container To (Deleted From)
30176	BREMEN GA 30110
30178	KINGSTON GA 30145
30179	BREMEN GA 30110
30182	BREMEN GA 30110
30183	CANTON GA 30115
30184	KINGSTON GA 30145
30185	DOUGLASVILLE GA 30134
30187	BREMEN GA 30110
30189	WOODSTOCK GA 30189
30205	SHARPSBURG GA 30277
30206	CONCORD GA 30206
30218	TYRONE GA 30290
30222	CONCORD GA 30206
30228	HAMPTON GA 30228
30234	LUTHERSVILLE GA 30251
30248	LUTHERSVILLE GA 30251
30251	LUTHERSVILLE GA 30251
30256	CONCORD GA 30206
30257	LUTHERSVILLE GA 30251
30258	CONCORD GA 30206
30259	LUTHERSVILLE GA 30251
30269	PEACHTREE CITY GA 30269
30276	CONCORD GA 30206
30277	SHARPSBURG GA 30277
30285	CONCORD GA 30206
30286	HAMPTON GA 30228
30288	PEACHTREE CITY GA 30269
30290	TYRONE GA 30290
30292	CONCORD GA 30206
30293	TYRONE GA 30290
30295	CONCORD GA 30206
30308	ATLANTA GA 30324
30316	ATLANTA GA 30316
30317	ATLANTA GA 30316
30324	ATLANTA GA 30324
30337	ATLANTA GA 30306
30342	ATLANTA GA 30342
30354	ATLANTA GA 30342
31131	ATLANTA GA 31139
31139	ATLANTA GA 31139
31141	ATLANTA GA 31139
52204	AMANA IA 52203
94030	BURLINGAME CA 94010

* * * * *

L014 5-Digit ZIP Scheme Combinations for Hubs

* * * * *

Deleted

Column A Destination ZIP Codes	Column B Label Container To (Deleted From)	Column C HUB (Deleted From)
06749	WATERBURY CT 06749	WATERBURY CT 067

* * * * *

Pull-Out Information

Fraud

Missing, Lost, or Stolen U.S. Money Order Forms

Do Not Cash — Upon Receipt, Notify Local Postal Inspectors

Provide this listing to all Postal Service™ employees responsible for accepting and cashing postal money orders. Destroy all interim notices when the numbers listed appear in the *Postal Bulletin*. The new money order serial numbers consist of the first 10 digits. The eleventh digit is a check digit only.

Do not cash outdated money orders **104 151 601 to 692 600 000**. Advise holders to send invalid money orders to Canada Post Corporation, Ottawa, Canada K1A 0B1. Check for altered dollar amounts by holding money orders to the light.

010 001 0200 to 0299	035 035 4337 to 4399	066 648 2880 to 2899	094 580 7062 to 7099
010 504 1932 to 1999	037 312 7500 to 7599	066 787 3639 to 3699	094 639 4200 to 4299
011 582 1889 to 1899	037 706 9578 to 9599	066 845 7500 to 9999	095 070 7186 to 7199
011 588 2900 to 3099	037 805 3677 to 3699	067 093 3869 to 3899	095 076 8300 to 8399
012 441 0784 to 0799	037 909 5490 to 5499	068 895 0334 to 0399	095 354 6864 to 6899
012 579 5675 to 5699	037 931 4660 to 4699	070 724 4488 to 4499	097 224 1350 to 1599
013 289 6176 to 6199	039 145 6521 to 6595	070 841 9181 to 9199	100 160 3800 to 3899
013 610 0014 to 0099	040 024 3901 to 3999	070 844 2546 to 2599	104 667 6400 to 6499
014 932 1000 to 1099	040 674 7100 to 7199	070 916 1340 to 1399	104 876 8937 to 8999
014 972 0800 to 0899	040 688 8816 to 8899	071 047 5768 to 5799	112 049 4413 to 4499
015 363 0065 to 0099	041 299 6752 to 6799	071 179 9800 to 9899	112 870 9765 to 9799
017 028 3200 to 3299	041 623 8889 to 8899	071 386 3682 to 3699	113 319 2000 to 2099
018 569 5333 to 5399	041 803 6565 to 6599	071 507 6840 to 6899	114 402 3850 to 3899
018 986 5264 to 5299	043 129 1968 to 1997	072 045 9641 to 9699	114 866 5368 to 5397
019 518 2814 to 2899	043 205 5922 to 5999	072 675 8287 to 8299	116 154 2800 to 2899
020 698 5159 to 5199	044 087 3457 to 3499	073 763 0867 to 0876	116 986 4400 to 4499
020 844 7307 to 7399	044 087 4000 to 4099	073 763 0878 to 0887	117 175 1647 to 5169
020 972 8948 to 8999	044 226 2487 to 2512	073 763 0889 to 0898	117 951 4687 to 4699
022 021 9110 to 9181	044 306 4200 to 4299	077 617 5481 to 5499	117 951 5200 to 5299
022 037 1411 to 1499	044 306 4370 to 4599	077 999 4001 to 4090	119 786 3051 to 3064
022 527 9201 to 9210	045 524 4121 to 4298	078 174 4475 to 4499	119 815 8961 to 6199
022 529 1882 to 1899	046 800 9870 to 9899	078 219 4931 to 4999	119 850 7400 to 7499
023 637 7169 to 7199	047 352 4000 to 4099	078 250 4756 to 4799	119 850 7700 to 7999
024 380 4100 to 4199	048 383 7650 to 7659	078 823 8312 to 8399	121 634 0460 to 0499
024 496 6870 to 6896	048 396 3647 to 3699	079 374 0300 to 2499	122 451 9879 to 9899
025 092 0987 to 0999	051 142 0755 to 0799	079 807 2342 to 2399	122 714 6805 to 6900
025 369 5535 to 5599	051 774 8857 to 8899	082 721 0228 to 0254	124 916 0304 to 0499
025 729 1151 to 1199	051 781 2875 to 2885	083 140 5000 to 7499	126 423 0136 to 0169
025 729 1643 to 1799	051 977 7010 to 7023	083 784 8886 to 8899	127 500 2328 to 2399
026 492 3180 to 3199	052 058 7115 to 7199	083 913 6915 to 6999	160 901 2254 to 2299
027 361 0430 to 0499	054 450 1130 to 1167	084 478 3920 to 3999	161 103 6581 to 6599
027 369 4482 to 4495	057 670 0563 to 0599	086 000 8271 to 8299	161 194 2857 to 2899
027 671 8762 to 8776	058 187 3836 to 3899	086 798 3840 to 3849	162 032 4447 to 4499
027 787 9886 to 9899	058 523 3003 to 3099	088 404 4472 to 4499	163 257 1085 to 1099
027 965 9487 to 9499	058 591 1153 to 1299	088 404 5584 to 5699	164 359 2406 to 2499
028 100 8069 to 8099	058 895 3746 to 3799	088 757 8688 to 8699	166 101 1433 to 1499
028 191 1852 to 1999	059 986 0814 to 0899	088 757 9400 to 9499	167 555 5201 to 5212
028 850 3000 to 3199	060 406 7650 to 7699	089 358 2248 to 2257	167 555 5214 to 5299
029 510 1500 to 1599	063 491 8122 to 8199	090 663 9678 to 9684	169 618 6274 to 6299
030 687 0903 to 0999	063 916 9968 to 9999	091 818 0071 to 0099	171 806 6878 to 6893
030 701 3442 to 3499	064 091 4500 to 4599	093 106 9346 to 9355	173 639 4685 to 4699
031 077 4507 to 4799	065 170 0471 to 0499	093 203 0500 to 0599	174 238 2779 to 2799
032 295 7500 to 9999	065 255 7909 to 7999	093 684 3630 to 3699	174 281 9347 to 9399
034 394 1000 to 1099	065 392 6345 to 6399	094 081 5074 to 5099	175 251 2600 to 0699
034 943 0400 to 0799	066 099 2014 to 2099	094 216 2555 to 2599	176 281 7937 to 7950

176 281 7963 to 7999	219 568 7435 to 7456	252 612 3683 to 3699	258 405 4200 to 4299
176 731 6586 to 6599	219 568 7469 to 7487	252 469 2125 to 2199	258 405 4600 to 4699
178 254 5000 to 9999	221 316 5757 to 5799	252 833 3286 to 3297	258 405 5600 to 5699
178 881 9900 to 9999	223 476 3914 to 3999	253 470 3948 to 3999	258 405 5700 to 5799
180 031 2089 to 2098	223 565 4921 to 4957	253 565 7400 to 7499	258 405 5800 to 5899
180 403 7723 to 7741	223 565 4979 to 4999	254 252 2800 to 2899	258 405 5900 to 5999
180 428 4580 to 0599	224 636 4745 to 4765	254 252 2900 to 2999	258 405 6000 to 6099
182 368 7544 to 0599	224 636 4776 to 4799	254 252 3000 to 3099	258 405 6100 to 6199
182 475 3229 to 3258	224 636 4855 to 4885	254 252 3100 to 3199	258 405 6200 to 6299
182 475 3904 to 3933	224 636 4932 to 4948	254 252 3200 to 3299	258 405 6300 to 6399
182 631 0031 to 0099	224 636 4950 to 4962	254 252 3300 to 3399	258 405 6400 to 6499
182 911 6539 to 6600	224 636 4985 to 4999	254 252 3400 to 3499	258 405 6800 to 6899
184 218 2760 to 2799	224 723 0757 to 0799	254 252 3500 to 3599	258 405 6900 to 6999
185 828 1474 to 1499	224 730 2207 to 2299	254 252 3600 to 3699	258 405 7000 to 7099
186 132 7583 to 0599	225 970 0500 to 0599	254 252 3700 to 3799	258 405 7100 to 7199
186 629 0589 to 0599	225 970 0600 to 0699	254 252 3800 to 3899	258 405 7200 to 7299
187 184 6177 to 0199	225 970 0700 to 0799	254 252 3900 to 3999	258 405 7300 to 7399
187 323 8200 to 8299	227 033 8679 to 8699	254 252 4000 to 4099	258 405 7400 to 7499
187 441 6080 to 6099	227 275 9400 to 9999	254 252 4100 to 4199	258 405 7800 to 7899
188 831 6774 to 6799	228 463 2456 to 2499	254 252 4200 to 4299	258 405 7900 to 7999
188 835 6370 to 6399	228 510 4852 to 4899	254 252 4300 to 4399	258 405 8000 to 8099
189 083 1064 to 1099	229 462 8451 to 8475	254 252 4400 to 4499	258 405 8100 to 8199
189 660 9583 to 9599	229 668 5977 to 5999	254 252 4500 to 4599	258 405 8200 to 8299
191 179 0377 to 0399	229 923 9176 to 9199	254 252 4600 to 4699	258 405 8300 to 8399
192 050 5762 to 5781	229 924 6696 to 6699	254 252 4700 to 4799	258 405 8400 to 8499
194 456 8600 to 0699	230 051 9500 to 9999	254 252 4800 to 4899	258 405 8500 to 8599
195 194 6881 to 6899	236 366 2431 to 2499	254 252 4900 to 4999	258 405 8600 to 8699
195 874 1112 to 1199	236 607 6882 to 6899	254 565 7607 to 7700	258 405 8700 to 8799
196 979 0524 to 0599	236 660 5853 to 5872	254 907 1203 to 1299	258 405 8800 to 8899
197 244 6100 to 6199	239 322 5200 to 5299	255 185 9527 to 9599	258 405 8900 to 8999
197 244 6300 to 6399	239 322 5400 to 5499	255 397 1557 to 1576	258 405 9600 to 9699
197 244 6400 to 6499	239 322 5600 to 5699	255 425 2989 to 2998	258 405 9700 to 9799
197 244 6500 to 6599	239 322 5800 to 5899	255 728 6412 to 6499	258 405 9800 to 9899
197 244 6600 to 6699	239 322 5900 to 5999	255 728 9842 to 9899	258 405 9900 to 9999
197 244 6700 to 6799	239 607 4783 to 4799	256 134 9833 to 9839	259 014 9989 to 9999
197 244 6800 to 8999	240 593 1879 to 1899	256 134 9840 to 9849	259 062 4788 to 4798
198 285 2556 to 2566	242 591 2048 to 2099	256 134 9850 to 9859	259 218 1400 to 1499
199 105 0778 to 0799	242 735 0388 to 0398	256 134 9860 to 9869	259 218 1500 to 1599
199 678 2968 to 2999	242 951 7276 to 7299	256 134 9870 to 9879	259 218 1600 to 1699
202 748 5133 to 5199	243 535 6370 to 6399	256 134 9880 to 9889	259 590 5654 to 5699
202 748 5245 to 5299	244 004 9985 to 9999	256 134 9890 to 9899	259 670 8268 to 8299
202 748 5300 to 5399	244 004 9985 to 9999	256 247 6900 to 6999	259 835 6238 to 6399
202 748 5400 to 5499	244 268 9765 to 9799	256 550 5536 to 5545	259 835 6701 to 6799
203 256 1240 to 1299	244 347 4471 to 4499	256 799 2257 to 2299	260 224 4600 to 4699
204 230 3577 to 3595	249 056 1551 to 1599	257 154 8763 to 8799	260 224 5941 to 5999
205 019 0174 to 0199	249 336 9438 to 9499	257 154 8800 to 8899	260 310 2821 to 2899
206 936 3184 to 3199	249 399 4000 to 4099	257 765 4567 to 4599	260 452 0010 to 0022
207 196 9900 to 9999	249 399 4100 to 4199	257 765 4610 to 4696	260 452 0049 to 4299
207 204 0700 to 0799	249 399 4200 to 4299	257 765 4737 to 4799	260 553 8200 to 8299
207 204 0800 to 0899	249 399 4300 to 4399	257 792 7800 to 7889	260 553 8600 to 8699
207 514 3857 to 3899	249 399 4400 to 4499	257 792 7900 to 7999	260 553 9600 to 9799
208 556 4707 to 4799	249 399 4500 to 4599	257 792 8000 to 8099	260 553 9800 to 9899
210 057 4038 to 4047	249 399 4600 to 4699	257 856 9863 to 9899	260 553 9900 to 9999
210 221 0548 to 0599	249 399 4700 to 4799	258 103 1773 to 1782	260 761 1603 to 1662
214 061 4711 to 4724	249 399 4800 to 4899	258 405 1800 to 1899	261 183 2100 to 2299
214 303 6311 to 6325	249 399 4900 to 4999	258 405 1900 to 1999	261 426 0408 to 0499
214 303 6239 to 6258	250 159 7502 to 7599	258 405 3300 to 3399	262 082 8000 to 8099
214 877 4251 to 4273	250 566 9644 to 9699	258 405 3400 to 3499	262 082 8100 to 8199
215 252 3918 to 3992	250 661 8425 to 8499	258 405 3500 to 3599	262 082 8200 to 8299
217 585 1400 to 1499	251 335 5731 to 5799	258 405 3700 to 3799	262 082 8300 to 8399
218 698 2157 to 2199	251 379 2380 to 2399	258 405 3800 to 3899	262 082 8400 to 8499
218 746 0800 to 0899	252 005 7626 to 7699	258 405 3900 to 3999	262 288 7302 to 7399
219 095 0100 to 0399	252 421 8401 to 8499	258 405 4000 to 4099	262 288 7400 to 7499
219 389 1885 to 1899	252 464 2810 to 2899	258 405 4100 to 4199	262 288 9900 to 9999

262 337 2600 to 2699	262 337 9000 to 9099	273 775 7700 to 7899	395 343 3264 to 3299
262 337 2700 to 2700	262 337 9100 to 9199	273 882 1913 to 1998	395 373 3035 to 3099
262 337 2800 to 2800	262 337 9200 to 9299	274 750 0300 to 0400	395 396 9649 to 9799
262 337 2900 to 2900	262 337 9300 to 9399	274 782 0549 to 0599	395 970 3240 to 3299
262 337 3000 to 3099	262 337 9400 to 9499	279 517 9330 to 9399	397 622 4054 to 4099
262 337 3100 to 3199	262 337 9500 to 9599	279 517 9594 to 9599	397 819 8902 to 8999
262 337 3200 to 3299	262 337 9600 to 9699	279 517 9623 to 9699	398 149 7200 to 7699
262 337 3300 to 3399	262 337 9700 to 9799	282 667 2500 to 4999	399 070 0872 to 0899
262 337 3400 to 3499	262 337 9800 to 9899	302 000 0000 to 9999	399 156 7119 to 7199
262 337 3500 to 3599	262 337 9900 to 9999	349 746 2056 to 2099	399 203 5064 to 5099
262 337 3600 to 3699	262 472 3188 to 3199	350 518 7350 to 7374	399 296 9910 to 9999
262 337 3700 to 3799	262 472 3200 to 3299	360 011 1690 to 1699	399 396 8935 to 8999
262 337 3800 to 3899	262 546 3100 to 3199	360 168 6008 to 6099	399 792 7775 to 7799
262 337 3900 to 3999	262 546 3200 to 3299	360 173 8800 to 8899	399 792 8300 to 8399
262 337 4000 to 4099	262 546 3300 to 3399	360 324 2326 to 2399	400 427 1051 to 1999
262 337 4100 to 4199	262 546 3400 to 3499	362 861 3064 to 3099	401 045 1505 to 1549
262 337 4200 to 4299	262 546 3500 to 3599	373 006 2176 to 2199	401 045 1571 to 1599
262 337 4300 to 4399	262 546 3600 to 3699	374 768 2600 to 2699	401 294 2700 to 2799
262 337 4400 to 4499	262 546 3900 to 3999	375 169 4400 to 4599	401 310 9505 to 9599
262 337 4500 to 4599	262 546 4300 to 4399	375 829 3400 to 3499	401 382 5312 to 5399
262 337 4600 to 4699	262 546 4400 to 4499	375 851 9100 to 9199	402 578 7876 to 7899
262 337 4700 to 4799	262 546 4500 to 4599	376 196 0911 to 0999	403 125 6744 to 6799
262 337 4800 to 4899	262 546 4600 to 4699	378 085 3679 to 3699	403 260 7000 to 7499
262 337 4900 to 4999	262 546 4700 to 4799	378 351 1063 to 1099	403 280 6470 to 6499
262 337 5000 to 5099	262 546 4800 to 4899	379 843 5100 to 5199	403 685 8600 to 8699
262 337 5100 to 5199	262 546 4900 to 4999	380 093 9600 to 9699	404 003 0300 to 0399
262 337 5200 to 5299	262 546 7100 to 7199	380 165 1165 to 1199	404 041 8838 to 8899
262 337 5300 to 5399	262 546 7200 to 7299	381 325 4500 to 4599	404 071 4268 to 4299
262 337 5400 to 5499	262 546 7300 to 7399	381 604 2510 to 2699	404 347 5356 to 5399
262 337 5500 to 5599	262 546 7400 to 7499	381 645 9525 to 9599	404 347 5548 to 5599
262 337 5600 to 5699	262 546 9800 to 9899	383 314 3968 to 3999	404 726 4500 to 4599
262 337 5700 to 5799	262 546 9900 to 9999	383 892 1000 to 1344	404 961 5001 to 5199
262 337 5800 to 5899	262 567 1788 to 1799	383 892 1382 to 1399	405 325 0188 to 0198
262 337 5900 to 5999	263 254 2500 to 2500	384 925 3641 to 3654	406 009 4587 to 4599
262 337 6000 to 6099	263 340 0000 to 0099	385 568 2331 to 2399	406 260 6830 to 6899
262 337 6100 to 6199	263 340 0100 to 0199	385 599 7554 to 7575	406 459 6641 to 6999
262 337 6200 to 6299	263 340 0500 to 0599	385 774 2024 to 2099	406 733 3000 to 3999
262 337 6300 to 6399	263 340 0600 to 0699	386 624 1412 to 1599	407 545 1557 to 1599
262 337 6400 to 6499	263 340 2700 to 2799	386 883 8936 to 8999	407 594 0412 to 0599
262 337 6500 to 6599	263 340 2800 to 2899	387 314 5574 to 5599	407 692 9100 to 9299
262 337 6600 to 6699	263 340 3000 to 3099	387 837 6300 to 6399	407 959 2190 to 2199
262 337 6700 to 6799	264 341 2360 to 2399	388 828 0656 to 0699	408 265 2275 to 2288
262 337 6800 to 6899	264 380 4000 to 4099	389 696 2400 to 2799	408 499 7700 to 7799
262 337 6900 to 6999	264 380 4100 to 4199	389 846 3104 to 3135	408 499 7900 to 7999
262 337 7000 to 7099	264 799 6049 to 6099	389 846 3145 to 3195	408 682 8484 to 8599
262 337 7100 to 7199	264 860 7832 to 7868	389 887 9211 to 9230	408 698 7015 to 7099
262 337 7200 to 7299	265 127 3658 to 3699	389 887 9234 to 9299	409 072 3941 to 3999
262 337 7300 to 7399	265 380 7111 to 7137	390 001 3182 to 3199	410 491 2311 to 2399
262 337 7400 to 7499	265 444 4762 to 4799	390 001 3500 to 3699	410 694 8400 to 8599
262 337 7500 to 7599	265 548 7074 to 7099	390 545 5974 to 5999	410 775 1500 to 1599
262 337 7600 to 7699	266 106 0000 to 2499	391 104 6146 to 6199	410 795 7927 to 7999
262 337 7700 to 7799	266 129 5809 to 5899	391 574 1466 to 1499	410 867 0917 to 0966
262 337 7800 to 7899	266 673 0000 to 2499	391 783 3020 to 3599	410 867 0970 to 0999
262 337 7900 to 7999	266 749 7900 to 7999	391 792 6100 to 6199	411 868 1023 to 1199
262 337 8000 to 8099	266 868 0952 to 0999	392 668 2956 to 2999	411 922 2322 to 2399
262 337 8100 to 8199	266 868 1028 to 1099	392 854 8500 to 8899	412 193 0900 to 0999
262 337 8200 to 8299	266 868 1100 to 1199	393 584 7566 to 7699	412 395 8599 to 8699
262 337 8300 to 8399	266 868 1200 to 1299	393 650 0074 to 0099	412 485 6500 to 6599
262 337 8400 to 8499	267 296 1237 to 1299	393 838 8316 to 8499	412 485 6610 to 6699
262 337 8500 to 8599	267 324 8946 to 8998	393 893 6007 to 6099	412 885 5953 to 5999
262 337 8600 to 8699	268 072 1203 to 1299	394 126 6907 to 6999	414 193 3608 to 3674
262 337 8700 to 8799	271 660 4333 to 4400	394 189 0405 to 0599	414 193 3677 to 3699
262 337 8800 to 8899	273 520 0000 to 9999	394 822 3243 to 3278	414 411 7348 to 7399
262 337 8900 to 8999	273 520 6000 to 8999	394 990 1810 to 1899	414 640 0757 to 0799

493 716 2153	to 2199	513 539 9985	to 9999	618 840 9200	to 9299	640 289 7700	to 7999
494 206 2972	to 2999	513 606 5459	to 5490	619 551 7229	to 7299	641 170 4420	to 4499
494 217 3446	to 3999	513 812 1751	to 1799	619 859 3000	to 3099	641 318 3133	to 3199
494 224 0500	to 0599	514 103 3600	to 3699	620 073 9400 to 9499		641 378 6500	to 6999
495 145 0600	to 0699	514 103 3700	to 3799	621 614 7907	to 7930	641 383 8739	to 8799
496 209 7425	to 7499	514 103 3800	to 3899	621 614 7932	to 7999	641 877 3187	to 3299
496 213 8728	to 8799	600 645 3223 to 3299		621 648 8021	to 8199	641 877 3310	to 3399
496 474 5226	to 5248	601 339 1200	to 1399	621 648 8500	to 8599	642 355 8094	to 8199
497 053 8517	to 8699	601 653 5884	to 5899	621 904 8351	to 8599	642 355 8308	to 8999
497 854 8673	to 8699	601 661 7700	to 7799	621 916 1978	to 1989	642 900 0018	to 0099
498 449 8888	to 8899	601 682 5343	to 5399	622 989 8032	to 8099	643 030 6254	to 6299
498 929 8285	to 8499	601 928 1600	to 1699	623 076 9300	to 9399	644 066 0882	to 0899
498 936 5310	to 5399	602 512 2972	to 2999	623 819 5006	to 5099	644 069 0600	to 0699
499 016 5425	to 5499	602 555 2400	to 2799	623 895 8200	to 8399	644 077 7506	to 7699
499 440 8575	to 8899	602 829 7061	to 7099	623 917 0000	to 0099	644 085 8157	to 8199
499 731 6717	to 6799	603 483 9572	to 9599	623 917 0200	to 0299	644 112 9839	to 8899
500 064 1858 to 1869		603 490 7200	to 7299	624 468 5288	to 5299	644 373 9083	to 9099
500 070 5725	to 7799	603 678 7100	to 7199	624 665 3162	to 3198	644 380 1460	to 1499
501 058 0016	to 0026	603 678 7662	to 7699	625 088 6735	to 6799	644 733 4715	to 4799
501 331 0300	to 0399	603 678 7902	to 7999	625 916 9500	to 9799	644 900 9712	to 9799
501 460 0977	to 0999	603 678 8418	to 8499	625 968 8956	to 8999	644 901 0109	to 1299
502 227 7645	to 7699	603 678 8700	to 9999	627 005 3938	to 3999	644 901 1325	to 1399
502 424 0200	to 0499	604 086 0880	to 0899	627 384 3907	to 4099	644 923 6800	to 7799
502 424 0600	to 0699	604 349 1414	to 1499	627 496 7549	to 7599	644 932 4655	to 4699
502 496 6923	to 6999	604 503 7776	to 7799	627 708 3605	to 3699	645 318 7240	to 7499
503 003 2700	to 2899	605 520 9037	to 9099	627 776 2500	to 2599	645 333 1766	to 1799
503 194 5144	to 5153	605 685 4010	to 4099	628 226 3100	to 3199	645 790 8632	to 8699
503 790 9922	to 9948	605 988 6467	to 6499	628 814 4702	to 4799	645 821 0657	to 0699
504 045 4030	to 4099	607 689 7951	to 7960	628 851 9689	to 9699	645 930 7948	to 7999
504 166 0200	to 0599	607 728 1276	to 1299	629 510 7200	to 7299	645 975 0737	to 0762
504 240 1062	to 1399	608 727 7100	to 7199	629 964 4200	to 4294	646 242 6200	to 6299
504 805 3300	to 3499	608 727 7273	to 7599	630 389 3056 to 3071		646 270 7639	to 7799
505 096 0662	to 0699	608 813 9950	to 9999	630 463 0588	to 0599	646 798 4000	to 4999
505 893 7739	to 7799	609 067 5325	to 5399	631 459 9117	to 9199	647 048 7035	to 7099
505 893 7800	to 7999	609 067 5488	to 5499	631 762 9325	to 9399	647 049 2900	to 2999
506 124 0800	to 0999	609 067 5600	to 5699	632 217 4933	to 4999	647 398 8300	to 8399
506 165 7027	to 0099	609 289 6123	to 6199	632 500 0000	to 640 3999	647 398 8481	to 8499
506 502 5209	to 5299	609 438 4400	to 4499	633 110 4165	to 4199	647 437 3000	to 4999
506 756 1682	to 1699	609 493 1100	to 1199	633 110 4303	to 4499	647 811 2188	to 2199
506 756 1700	to 1799	609 766 8091	to 8999	633 438 6429	to 6599	648 009 6057	to 6099
506 756 1800	to 1899	609 825 4100	to 4115	633 588 7173	to 7182	648 163 5300	to 5499
506 836 5326	to 5399	609 884 2981	to 2999	634 725 0700	to 0799	648 722 5283	to 5299
508 488 6226	to 6299	609 893 1000	to 1099	634 803 3239	to 3299	648 892 3164	to 3199
508 789 8332	to 8399	610 092 3200 to 3299		634 807 2474	to 2499	649 100 3989	to 3999
508 789 8400	to 8499	610 582 4200	to 4299	634 827 5900	to 5999	649 647 0370	to 0399
509 909 0425	to 0435	611 879 6939	to 6999	634 886 3428	to 3499	649 647 0522	to 0599
510 150 2400 to 2499		612 291 8013	to 8099	635 559 3449	to 3499	649 647 5237	to 5399
510 381 3200	to 3299	612 751 5171	to 5199	636 289 6214	to 6299	649 647 9100	to 9299
510 587 9500	to 9599	612 751 5226	to 5299	636 634 8007	to 8042	649 666 7800	to 8299
510 587 9659	to 9699	612 751 6083	to 6099	637 150 1200	to 1299	650 114 7707 to 7719	
510 269 9770	to 9999	612 751 6268	to 6299	637 562 5828	to 5899	650 130 3400	to 3599
511 021 5042	to 5099	612 751 6572	to 6599	638 042 1647	to 1699	650 213 0406	to 0499
511 021 5100	to 5199	612 774 2111	to 2199	638 049 4984	to 4999	650 555 1749	to 1799
511 468 1747	to 1799	612 774 2254	to 2299	638 318 1115	to 1199	650 564 1900	to 1999
511 844 0100	to 0199	612 774 2500	to 2599	638 318 1453	to 1499	650 627 4212	to 4299
511 844 0340	to 0399	614 469 0979	to 0999	638 885 0000	to 0299	650 736 2043	to 2099
512 805 3913	to 3919	614 474 3000	to 3099	638 903 4362	to 4373	650 739 1540	to 1699
513 046 0700	to 0726	614 521 3490	to 3499	639 415 1929	to 1999	651 741 4415	to 4499
513 149 0600	to 0699	614 645 1800	to 1899	639 415 2019	to 2099	651 882 2800	to 2899
513 445 3000	to 3199	614 832 1100	to 2099	639 420 6200	to 6299	652 754 6317	to 6399
513 466 2034	to 2044	615 017 7505	to 7599	639 469 3517	to 3799	653 131 4945	to 4999
513 539 9052	to 9099	617 711 6609	to 6699	639 605 2143	to 2199	653 426 3300	to 3399
513 539 9267	to 9299	617 760 5266	to 5299	639 657 8600	to 8799	653 455 4874	to 4899
513 539 9800	to 9899	617 813 3601	to 3699	640 289 7500 to 7599		654 238 0000	to 0399

843 077 6288 to 6299	864 520 6117 to 6136	907 815 0216 to 0257	919 915 2774 to 2787
843 077 6378 to 6399	865 151 0526 to 0599	908 622 4225 to 4235	920 155 4662 to 4687
843 758 5769 to 5778	865 500 4034 to 4099	908 936 9254 to 9299	920 309 9039 to 9199
843 786 2554 to 2699	865 883 6082 to 6099	909 066 4494 to 7499	920 771 5321 to 5399
845 656 8165 to 8199	866 004 3000 to 3999	909 067 7400 to 7499	920 857 5500 to 5899
845 727 2100 to 2199	866 442 4100 to 4899	909 100 1787 to 1799	920 864 3480 to 3499
845 746 2618 to 2635	867 366 9108 to 9118	909 100 1900 to 2099	920 963 4567 to 4599
846 390 7531 to 7599	867 633 7403 to 7499	909 355 0422 to 0499	921 333 7400 to 7499
846 918 0572 to 0599	867 737 5623 to 5699	909 568 8900 to 9099	921 477 3762 to 3799
847 237 7690 to 7699	868 169 4529 to 4599	909 568 9300 to 9499	922 278 1048 to 1399
847 284 2481 to 2499	868 173 8400 to 8599	909 725 7307 to 7399	922 280 2019 to 2099
847 374 7055 to 7065	868 514 9000 to 9099	909 833 0947 to 0999	922 280 2233 to 2299
847 374 7055 to 7065	868 566 9200 to 9299	910 219 8631 to 8699	922 773 0459 to 0499
847 636 5304 to 5399	869 200 0000 to 9999	910 265 1100 to 1199	923 032 7000 to 7399
847 700 5447 to 5499	869 387 1150 to 1199	910 471 7273 to 7299	923 045 3630 to 3699
847 723 7500 to 7599	869 505 3500 to 3599	910 536 2505 to 2599	923 484 3600 to 3699
849 485 3427 to 3499	869 523 7033 to 7099	910 958 7499 to 7599	923 493 9403 to 9599
849 520 9850 to 9899	869 566 6150 to 6167	911 140 1000 to 2199	923 493 9681 to 9699
849 608 1357 to 1399	869 776 8785 to 8786	911 245 2545 to 2599	923 604 4424 to 4499
849 792 2600 to 2699	869 800 0000 to 999 9999	911 268 9077 to 9099	923 810 7800 to 8299
850 546 1862 to 1899	870 054 4814 to 4899	911 400 8948 to 8999	924 252 1200 to 1299
851 143 6826 to 6844	870 491 4812 to 4849	911 508 1620 to 1799	924 252 1400 to 1499
851 209 9880 to 9899	870 536 5820 to 5829	911 509 9310 to 9399	924 533 0711 to 0799
851 928 9221 to 9299	870 541 7167 to 7239	911 523 3000 to 3999	924 533 2343 to 2399
852 589 6560 to 6599	870 575 8155 to 8999	912 057 9922 to 9999	924 533 2428 to 2499
853 049 3646 to 3699	870 589 0485 to 0494	912 882 0563 to 0899	924 685 1957 to 1999
854 304 4089 to 4999	870 691 7060 to 7099	913 605 2218 to 2299	924 946 6300 to 6699
854 529 2200 to 2299	872 028 4850 to 4899	913 709 2429 to 2499	925 333 5900 to 6099
854 532 0000 to 2999	872 029 9306 to 9399	913 818 3501 to 3999	925 336 2300 to 2399
855 001 6204 to 6249	872 078 3709 to 3799	914 063 4300 to 4399	926 432 5907 to 5999
855 319 9364 to 9399	872 100 0445 to 0459	914 346 7621 to 7644	926 436 3600 to 3699
855 361 3390 to 3399	900 556 4178 to 4199	914 453 1366 to 1399	927 765 6257 to 6299
856 226 0490 to 0499	900 845 0044 to 0099	914 529 6185 to 6299	928 197 8100 to 8199
856 656 5800 to 5999	900 936 0217 to 0299	914 896 4658 to 4699	928 197 8283 to 8299
856 752 0200 to 0299	900 936 0435 to 0499	915 187 8774 to 8779	928 856 2059 to 2068
857 111 1352 to 1399	901 058 5255 to 5280	915 300 2783 to 2799	930 078 5800 to 5899
857 279 3450 to 3499	901 273 1082 to 1099	915 546 6822 to 6999	930 219 1722 to 1799
857 843 4000 to 4099	901 287 5143 to 5199	915 646 5183 to 5199	930 335 7810 to 7819
858 124 7644 to 7699	901 291 2789 to 2799	915 671 3963 to 3980	931 097 9259 to 9299
858 756 3111 to 3299	901 525 7122 to 7199	915 671 3982 to 3999	931 156 1502 to 1579
859 063 8200 to 8699	902 089 1253 to 1299	915 675 2217 to 2299	931 156 1600 to 1625
859 190 0600 to 0644	902 198 9769 to 9799	916 440 3377 to 3399	931 156 1671 to 1699
859 437 5538 to 5599	902 948 1269 to 1299	916 670 6352 to 6399	932 506 6400 to 6599
859 811 2888 to 2899	902 985 0833 to 0899	916 682 5300 to 5399	932 732 1796 to 1799
859 855 8873 to 8999	903 370 6934 to 6999	916 694 1414 to 1499	932 827 9026 to 9099
860 240 8520 to 8599	904 600 6523 to 6599	916 703 0802 to 0821	932 957 2300 to 2399
860 275 3900 to 3999	904 892 0378 to 0399	917 089 0709 to 0799	933 060 6160 to 6189
860 518 9629 to 9699	904 892 0648 to 1299	917 089 0842 to 0899	933 387 2541 to 2561
860 600 0021 to 0999	905 056 2216 to 2299	917 216 2928 to 2999	933 760 3609 to 4199
861 158 2350 to 2599	905 510 6647 to 6799	917 370 6300 to 6499	933 894 0928 to 0999
861 367 5400 to 5499	905 510 6900 to 7099	917 486 4900 to 4999	934 018 2729 to 2741
861 637 6010 to 6099	905 794 0000 to 0199	918 460 0602 to 0699	934 180 0300 to 0399
861 979 7292 to 7499	905 794 0288 to 0299	918 951 7231 to 7299	934 236 3954 to 3999
862 216 6100 to 6199	905 873 6900 to 6999	919 519 2786 to 2799	934 622 8717 to 8999
862 263 9213 to 9299	905 873 7100 to 7299	919 536 0770 to 0799	935 216 0312 to 0399
862 271 0800 to 0999	905 880 8900 to 8999	919 814 3095 to 3199	935 843 2202 to 2247
862 271 5000 to 5099	905 889 7100 to 7199	919 889 5110 to 5134	936 024 8889 to 8899
863 871 5138 to 5199	906 158 1508 to 1599	919 889 5137 to 5176	936 339 4455 to 4499
863 949 5300 to 5399	906 558 8812 to 8899	919 889 5178 to 5199	
864 088 8200 to 8299	906 982 2214 to 2299	919 889 5030 to 5070	
864 426 3972 to 3999	907 725 8500 to 8599	919 889 5090 to 5099	

Missing, Lost, or Stolen Canadian Money Order Forms

Do Not Cash — Upon Receipt, Notify Local Postal Inspectors

Provide this listing to all Postal Service™ employees responsible for accepting and cashing postal money orders. Destroy all interim notices when the numbers listed appear in the *Postal Bulletin*. The new money order serial

numbers consist of the first 9 digits. The tenth digit is a check digit only.

Do not cash outdated money orders **104 151 601 to 692 600 000**. Advise holders to send invalid money orders to Canada Post Corporation, Ottawa, Canada K1A 0B1. Check for altered dollar amounts by holding money orders to the light.

719 869 731	to	9 760	728 702 338	to	2 400	734 950 111	to	0 170	742 325 668	to	5 700
720 227 871	to	7 930	728 915 371	to	5 850	735 120 331	to	0 840	742 408 771	to	8 830
720 227 949	to	7 960	728 953 141	to	3 410	735 283 008	to	3 020	742 512 120	to	2 150
720 368 543	to	8 570	728 954 280	to	4 310	735 293 131	to	3 220	742 684 849	to	4 890
720 392 151	to	2 570	729 169 081	to	9 140	735 635 010	to	5 040	742 839 553	to	9 630
720 556 491	to	6 640	729 363 841	to	3 870	735 783 961	to	3 990	742 913 668	to	3 700
720 558 621	to	8 650	729 682 891	to	3 190	735 803 401	to	3 430	742 917 287	to	7 296
720 575 361	to	5 570	729 838 940	to	9 070	736 005 420	to	5 440	742 921 891	to	1 980
720 590 152	to	0 179	729 839 101	to	9 130	736 366 021	to	6 110	742 983 631	to	3 810
721 638 331	to	9 170	730 077 683	to	7 840	736 624 456	to	4 500	743 020 021	to	0 170
721 815 391	to	5 420	730 109 847	to	9 880	736 670 851	to	1 060	743 206 491	to	6 500
721 969 713	to	9 740	730 373 761	to	3 850	736 767 061	to	7 090	743 235 992	to	6 050
722 072 137	to	2 160	730 501 951	to	2 130	736 767 093	to	7 120	743 940 631	to	0 900
722 378 265	to	8 280	730 519 379	to	9 470	736 982 191	to	2 370	743 978 011	to	8 070
722 413 990	to	4 004	730 569 278	to	9 360	736 982 551	to	2 730	744 234 751	to	4 780
722 764 948	to	4 980	730 711 711	to	1 740	737 110 141	to	0 170	744 499 591	to	9 680
722 825 840	to	5 889	730 722 991	to	3 230	737 185 501	to	5 710	744 626 901	to	6 910
723 153 841	to	3 850	730 845 970	to	5 990	737 317 321	to	7 350	745 388 794	to	8 910
723 237 616	to	7 630	730 888 291	to	8 320	737 517 781	to	7 840	746 446 806	to	6 820
723 331 081	to	1 110	730 927 591	to	7 680	737 628 181	to	8 210	746 818 351	to	8 410
723 496 443	to	6 470	731 307 914	to	7 930	737 634 258	to	4 270	747 245 266	to	5 280
723 967 291	to	7 320	731 402 431	to	2 460	738 361 971	to	1 980	747 364 813	to	4 830
724 655 196	to	5 340	731 407 232	to	7 320	738 447 601	to	7 660	747 501 434	to	1 450
724 711 441	to	1 500	731 588 301	to	8 340	738 648 355	to	8 450	747 739 891	to	0 070
724 711 538	to	1 560	731 767 273	to	7 320	738 849 811	to	9 900	748 148 649	to	8 760
724 793 221	to	3 250	731 781 061	to	1 120	738 892 270	to	2 290	748 259 960	to	9 970
724 908 109	to	8 120	731 837 821	to	7 910	738 997 259	to	7 380	748 565 162	to	5 280
724 937 461	to	7 670	731 841 377	to	1 450	739 161 451	to	1 540	748 874 988	to	5 030
725 163 118	to	3 151	732 018 481	to	8 600	739 219 381	to	9 440	749 137 381	to	7 410
725 202 735	to	2 750	732 067 972	to	8 370	739 740 151	to	0 180	749 190 192	to	0 210
725 398 591	to	8 800	732 188 649	to	8 670	739 793 491	to	3 520	749 685 421	to	5 450
725 464 591	to	4 920	732 193 460	to	3 470	739 793 527	to	3 550	749 846 791	to	6 850
725 475 321	to	5 330	732 201 241	to	1 390	739 942 621	to	2 650	749 993 131	to	3 580
725 711 057	to	1 070	732 220 431	to	0 440	739 999 231	to	9 320	750 071 587	to	1 610
725 738 581	to	8 730	732 355 201	to	5 380	740 011 517	to	1 530	750 408 167	to	8 183
725 981 311	to	1 430	732 472 320	to	2 560	740 030 701	to	0 970	750 438 421	to	8 501
725 987 835	to	7 880	732 541 605	to	1 620	740 261 740	to	1 820	750 743 911	to	4 030
726 060 811	to	0 900	732 572 221	to	2 490	740 265 811	to	6 290	750 779 118	to	9 400
726 391 970	to	2 520	732 586 479	to	6 710	740 299 111	to	9 170	750 910 981	to	1 010
726 484 771	to	4 800	732 994 037	to	4 080	740 299 231	to	9 260	750 960 841	to	0 900
726 493 351	to	5 300	733 163 449	to	3 460	740 329 266	to	9 320	751 296 211	to	6 240
726 504 031	to	4 063	733 297 171	to	7 290	740 889 081	to	9 090	751 539 121	to	9 180
726 504 070	to	4 090	733 446 631	to	7 110	741 010 421	to	0 530	751 541 311	to	1 790
726 504 331	to	4 390	733 474 665	to	4 770	741 113 041	to	3 370	751 757 641	to	7 700
726 563 701	to	4 060	733 704 482	to	4 570	741 373 891	to	4 340	751 936 951	to	7 010
726 599 371	to	9 460	733 751 041	to	1 130	741 452 369	to	2 490	751 951 861	to	1 890
726 626 356	to	6 370	734 009 101	to	9 130	741 492 991	to	3 140	751 999 021	to	9 110
727 182 271	to	2 510	734 290 759	to	0 770	741 553 460	to	3 470	752 139 516	to	9 570
727 416 181	to	6 240	734 389 273	to	9 290	741 764 431	to	4 520	752 182 892	to	2 950
727 481 431	to	1 460	734 440 031	to	0 111	741 764 431	to	4 520	752 206 861	to	7 100
727 749 241	to	9 780	734 797 201	to	7 320	742 178 834	to	8 880	752 295 241	to	5 600
728 382 331	to	2 480	734 939 611	to	9 640	742 325 500	to	5 520	752 731 351	to	1 410

819 278 540	to	8 670	822 703 442	to	3 470	826 226 644	to	6 670	828 539 341	to	9 370
819 544 681	to	4 740	822 900 991	to	1 020	826 582 951	to	3 430	828 732 331	to	2 390
819 928 441	to	8 650	822 925 951	to	6 100	826 720 201	to	0 230	828 807 781	to	7 840
820 034 406	to	4 430	823 284 931	to	4 990	827 005 671	to	5 830	828 830 952	to	0 963
820 070 761	to	1 540	823 293 031	to	3 210	827 287 861	to	7 950	828 939 781	to	0 050
820 191 342	to	1 360	823 556 011	to	6 100	827 291 502	to	1 520	829 002 721	to	2 870
820 274 856	to	4 880	824 078 341	to	8 370	827 575 381	to	5 470	829 005 301	to	5 540
820 600 171	to	0 230	824 156 325	to	6 340	827 609 085	to	9 100	829 080 241	to	0 330
821 172 241	to	2 360	824 511 252	to	1 270	827 619 811	to	9 840	829 160 986	to	1 000
821 229 661	to	9 720	824 588 281	to	8 370	827 883 511	to	3 600	829 176 841	to	6 930
821 229 743	to	9 780	825 140 397	to	0 460	828 160 441	to	0 530	829 471 561	to	1 590
821 903 731	to	3 910	825 409 651	to	9 680	828 376 201	to	6 260	829 561 065	to	1 080
821 927 841	to	7 850	825 472 171	to	2 200	828 441 602	to	1 630	829 566 481	to	6 510
822 505 801	to	5 830	826 042 898	to	2 920	828 539 316	to	9 340	829 569 931	to	9 960

— Criminal Investigations Group, U.S. Postal Inspection Service, 3-21-24

Verifying U.S. Postal Service Money Orders

Follow these steps to cash a Postal Service™ money order:

1. Check that the amount does not exceed the legal limit: \$1,000 for domestic, and \$700 for international Postal Service money orders.
2. Check that the proper security features are present:
 - When held to the light, a watermark of Benjamin Franklin is repeated from top to bottom on the left side.
 - When held to the light, a dark line (security thread) runs from top to bottom with the word “USPS” repeated.
 - When there is discoloration around the dollar amounts, this might indicate the amounts were changed.

These appear in Postal Service Notice 299, *U.S. Postal Money Order Reference Card*, or online at usps.com/shop/money-orders.htm.

3. If the money order seems suspicious, call the U.S. Postal Service Money Order Verification System at 866-459-7822.

Provide this information to local banks and retailers, as they also receive Postal Service money orders for cashing.

— Delivery and Retail
Customer Service Operations, 3-21-24

Counterfeit Canadian Money Order Forms

Do Not Cash

To be posted and used by retail window employees. As directed, destroy previous notices. Destroy all interim notices when the numbers listed appear in the *Postal Bulletin*.

671,819,086	683,594,542	687,262,503
676,612,640	684,683,610	687,262,525
677,891,039	686,619,878	687,262,526
678,282,493	686,619,886	687,287,578
678,916,031	686,619,887	687,287,581
679,552,215	686,794,382	687,287,582
679,694,334	686,794,426	694,063,898
679,751,983	686,794,427	694,063,899
679,800,207	686,794,431	694,063,980
681,130,536	687,262,502	701,321,725
681,844,376		

— Criminal Investigations Group,
U.S. Postal Inspection Service, 3-21-24

Toll-Free Number Available to Verify Canadian Money Orders

The Canada Post Corporation has a toll-free number that cashing agents can call to verify the validity of Canadian Postal Money Orders. The number is 800-563-0444.

This toll-free number is printed on the back of the Canadian Postal Money Orders.

— Criminal Investigations Group,
U.S. Postal Inspection Service, 3-21-24

Other Information

Overseas Military/Diplomatic Mail

Mail addressed to military and diplomatic post offices overseas is subject to certain conditions or restrictions of mailing regarding content, preparation, and handling. The APO/FPO/DPO table outlines these conditions by APO/FPO/DPO ZIP Codes™ through the use of footnoted mailing restrictions codes (see the [Restrictions](#) page following the table).

Acceptance clerks must use the table with the Retail System Software terminal to determine which APO/FPO/DPO ZIP Codes are active and which conditions of mailing apply.

The entries under “Changes” appear in bold in the following APO/FPO/DPO table:

Changes

APO/FPO/DPO	Action	Effective Date	See Restrictions
DPO AE 09277	Remove I3, Z; Add C, C2	03/07/2024	A-B-C-C2-E-E1-E2-F1-F3-L-N-R-S-T-V-X-Z1
FPO AP 96692	Add E2	02/29/2024	B-C-C2-E2-F-F1-F3 -R-R1-S-V

We have eliminated “Not Active” entries from the table below to save space and paper.

APO/FPO/DPO Table

APO/FPO/DPO	See Restrictions	APO/FPO/DPO	See Restrictions	APO/FPO/DPO	See Restrictions	APO/FPO/DPO	See Restrictions
09002	A-B-C-C2-F-F3-H-N-R-S-V-Z1	09034	B-C-C2-D-E-F-F3-H-M-R-S-U	09114	B-C-C2-D-E-F-F3-H-M-R-S-U	09173	B-C-C2-D-E-F-F3-H-M-R-S-U
09003	B-C-C2-D-E-F-F3-H-M-P-R-S-U	09044	B-C-C2-D-E-F-F3-H-R-S-U	09116	A-B-C-C2-F-F3-H-N-R-S-V-Z1	09174	B-C-C2-F1-F3-L-N-R-R1-S-T-V-Z1
09004	B-C-C2-D-E-F-F3-H-M-R-S-U	09046	B-C-C2-D-E-F-F3-H-M-R-S-U	09118	A-B-C-C2-F-F1-F3-M-N-R-R1-S-V-Z1	09175	A-B-C-C1-C2-E2-F1-F3-H1-J-L-M-N-R-R1-S-T-V-W-X-Z1
09005	B-C-C2-D-E-F-F3-H-M-P-R-S	09049	B-C-C2-D-E-F-F3-H-M-R-S-U	09123	B-C-C2-D-E-F-F3-H-M-R-S-U-Z1	09176	A-B-C-C2-F1-F3-J-L-M-N-R-R1-S-T-V-X-Z1
09006	B-C-C2-D-E-F-F3-H-M-R-S-U	09053	B-C-C2-D-E-F-F3-H-M-R-S-U	09126	B-C-C2-F3-H-M-P-R-S-Z1	09177	B-C-C2-D-E-F-F3-H-M-R-S-U
09008	A-B-C-C2-F-F3-H-N-R-S-V-Z1	09060	B-C-C2-D-E-F1-F3-H-M-N-R-S-U-Z1	09128	B-C-C2-D-E-F-F3-H-M-R-S-U	09178	B-C1-C2-E2-F1-F3-I3-L-M-N-R-S-T-V-X-Z1
09009	B-C-C2-D-E-F-F3-H-M-R-S-U-Z1	09067	B-C-C2-D-E-F-F3-H-M-R-S-U	09131	B-C-C2-D-E-F-F3-H-M-R-S-U	09179	A-B-C-C1-C2-F1-F3-J-L-M-N-R-R1-S-T-V-X-Z1
09010	B-C-C2-D-E-F-F3-H-M-R-S-U2	09068	B-C-C2-D-E-F-F3-H-R-S-U-Z1	09135	A-B-C2-F-F3-H-N-R-S-U-V-Z1	09180	B-C-C2-D-E-F-F3-H-M-R-S-U
09011	B-C-C2-D-E-F-F3-H-M-R-S	09069	A-B-C-C2-D-E-F-F3-H-N-R-S-U-V	09136	B-C-C2-D-E-F-F3-H-M-P-R-S-U	09186	B-C-C2-D-E-F-F3-H-M-P-R-S-U
09012	B-C-C2-D-E-F-F3-H-M-R-S-U-Z1	09079	B-C-C2-D-E-F-F3-H-M-R-S-U	09138	B-C-C2-D-F-F3-H-M-R-S-U	09203	A-B-C-C1-C2-F1-F3-I3-J-L-M-N-R-R1-S-T-V-X-Z1
09013	B-C-C2-D-E-F-F1-F3-H-M-R-S-U-Z1	09094	B-C-C2-D-F3-H-M-P-R-S-Z1	09140	B-C-C2-D-E-F-F3-H-M-R-S-U	09204	B-C-F3-M-N-R-S-V-Z1
09014	B-C-C2-D-E-F-F3-H-M-P-R-S-U	09095	B-C-C2-D-E-F-F3-H-M-R-S-U	09142	B-C-C2-D-E-F-F3-H-M-R-S-U	09205	A-B-C-C2-E2-F-F3-M-N-R-S-T-V-X
09015	A-B-C-C1-C2-F-F1-F3-J-L-M-N-R-R1-S-V-Z1	09096	B-C-C2-D-E-F-F3-H-M-R-S-U	09154	B-C-C2-D-E-F-F3-H-M-R-S-U	09211	B-C-C2-D-E-F-F3-H-M-P-R-S-U
09016	B-C-C2-D-E-F1-F3-H-M-R-S-U	09101	A-B-C-C2-F-F3-H-N-Q-R-S-V-Z1	09160	B-C-C2-F1-F3-H-J-L-M-N-R-R1-S-T-U-V-X-Z1	09213	B-C-C2-F1-F3-H-J-L-M-N-R-R1-S-T-U-V-X-Z1
09017	A-B-C-C2-F-F3-H-N-R-S-V-Z1	09103	A-B-C-C2-F-F3-H-N-R-S-V-Z1	09170	A-B-C-C2-F1-F3-J-L-M-N-R-R1-S-T-V-X-Z1	09214	B-C-C2-D-E-F-F3-H-M-R-S-U-Z1
09018	A-B-C-C2-F-F3-H-N-R-S-V-Z1	09104	B-C-C2-D-F3-H-M-R-S-U-Z1	09171	A-B-C-C1-C2-E3-F1-F3-J-L-M-N-R-R1-S-T-V-X-Z1		
09020	B-C-C2-D-E-F-F3-H-M-R-S-U	09107	B-C-C2-D-E-F-F3-H-M-R-S-U	09172	B-C-C2-D-E-F-F3-H-M-R-S-U		
09021	B-C-C2-D-E-F-F3-H-M-R-S-U-Z1	09112	B-C-C2-D-E-F-F3-H-M-R-S-U				

APO/ FPO/ DPO	See Restrictions	APO/ FPO/ DPO	See Restrictions	APO/ FPO/ DPO	See Restrictions	APO/ FPO/ DPO	See Restrictions
09216	B,C,F1,F3,M,N,R,S,V,Z1	09291	B-C-C1-C2-E2-F1-F3-H1-L-N-R-R1-S-T-V-X-Z1	09357	A-B-C1-E2-F-F3-H1-M-R-V-Z1	09501	B-V
09227	B-C-C2-D-E-F-F3-H-M-R-S-U	09292	A-B-C-C2-E-E2-E3-F1-F3-H-H1-J-L-M-N-R-R1-S-T-V-X-Z1	09365	A-B-C-C1-E2-F-F3-H1-M-N-R-V-Z1	09502	B-V
09240	A-B-C1-C2-F-F3-H-N-R-S-V	09293	A-B-C-C1-C2-E-E2-F1-F3-I3-L-M-N-R-S-T-V-X-Z-Z1	09366	A-B-C-C1-E2-F-F1-F3-H-H1-M-R-R1-S-V-Z1	09503	B-F-F1-R-R1-V
09241	A-B-C-C2-F3-N-R-S-U-Z1	09294	B-C-C1-C2-E2-F1-F3-H1-L-N-R-R1-S-T-V-X-Z1	09401	B-C-C1-C2-F3-M-R-S-U-Z1	09504	B-V
09242	A-B-C-C1-C2-F-F3-H-N-R-S-V	09295	B-C-C1-C2-E2-F1-F3-H1-J-L-M-N-R-R1-S-T-V-X-Z1	09403	B-C-C1-C2-F3-M-R-S-U-Z1	09505	B-V
09250	B-C-C2-D-E-F-F3-H-M-R-S-U	09296	A-B2-C-C2-E1-F1-F3-L-N-R-S-T-V-X-Z1	09410	B-C-C2-F-F1-F3-N-R-S-U2	09506	B-V
09261	B-C-C2-D-E-F3-H-M-N-R-S-U-V-Z1	09297	A-B-C-C1-C2-E2-F1-F3-H1-I3-L-M-N-R-R1-S-T-U4-V-X-Z-Z1	09421	B-C-C1-C2-F3-M-R-S-U-Z1	09507	B-V
09263	B-C-C2-D-E-F3-H-M-R-S-U	09301	A-B-C-C1-C2-E2-F1-F3-H1-I3-L-M-N-R-R1-S-T-U4-V-X-Z-Z1	09424	B-C-C2-F1-F3-M-N-R-S-U-Z1	09508	B-C-C2-F-F3-R-R1-S-V
09264	B-C-C2-D-E-F-F3-H-M-R-S-U	09304	A-B-C-C1-C2-F-F1-F3-H-M-N-R-S-V-Z-Z1	09447	B-C-C1-C2-F3-M-R-S-U-V-Z1	09509	B-C-C2-F-F3-R-R1-S-V
09265	B-C-D-F-F1-H-J-L-M-N-R-S-T-U-V-Z1	09305	A-B-C1-E2-F-F1-F3-H1-I3-M-N-R-R1-S-T-V-Z-Z1	09454	B-C-C1-C2-F3-M-R-S-U-V-Z1	09510	B-C-C2-F-F3-R-R1-S-V
09266	A-B-C2-F3-S-U-R-V-Z1	09306	A-B-C1-E2-F-F1-F3-H1-R-R1-S-U2-V-Z1	09456	B-C-C1-C2-F3-M-N-R-S-U-V-Z1	09511	B-C-C2-F-F3-R-R1-S-V
09276	A-B-F-F3-I3-L-M-N-R-S-T-V-X-Z-Z1	09307	B-C-C2-F-F3-N-R-R1-S-Z1	09459	B-C-C1-C2-F3-M-R-S-U-Z1	09512	B-C-C2-F-F1-F3-R-R1-S-V
09277	A-B-C-C2-E-E1-E2-F1-F3-L-N-R-S-T-V-X-Z1	09309	A-B-C-C1-C2-E2-F1-F3-H1-M-N-R-R1-S-V-Z1	09461	B-C-C1-C2-F3-M-P-R-S-U-Z1	09513	B-C-C2-F-F1-F3-R-R1-S-V
09278	A-B-F-F3-I3-L-M-N-R-S-T-V-X-Z-Z1	09310	A-B-C-C1-E2-F1-F3-H1-I3-L-M-N-R-R1-S-T-U4-V-Z	09463	B-C-C1-C2-F3-M-R-S-U-Z1	09514	B-C-C2-F-F1-F3-R-R1-V
09279	A-B-E-E1-F-F3-I3-L-M-N-R-S-T-V-X-Z-Z1	09311	A-B-C1-C2-E2-F-F1-F3-H1-I3-L-M-N-R-R1-S-T-U4-V-Z-Z1	09464	B-C-C1-C2-F3-R-S-U-Z1	09516	B-C-C2-F-F1-F3-R-R1-S-V
09280	A-B-C-C1-C2-E-E2-F1-F3-H-I3-L-M-N-R-S-T-V-W-X-Z-Z1	09312	A-B-C-C1-E2-F1-F3-H1-I3-L-M-N-R-R1-S-T-U4-V-X-Z-Z1	09467	B-C-C2-E-E1-F1-F3-J-L-M-N-R-S-T-V-W-X-Z1	09517	B-C-C2-F-F1-F3-R-R1-S-V
09281	A-B-C-C1-C2-E2-E3-F1-F3-H-H1-I3-J-L-M-N-R-R1-S-T-V-X-Z-Z1	09315	A-B-C1-E2-F-F3-N-R-R1-S-V-Z1	09468	B-C-C1-C2-F3-M-R-S-U-Z1	09520	B-F-F1-F3-R-R1-S-V
09282	A-B-C-C1-C2-E2-E3-F1-F3-H-H1-J-L-M-N-R-R1-S-T-V-X-Z1	09316	A-B-C1-E2-F-F1-F3-H1-I3-M-N-R-R1-S-T-V-Z-Z1	09469	B-C-C1-C2-F3-R-S-U-Z1	09523	B-C-C2-F-F1-F3-R-R1-S-V
09283	A-B-C-C2-E-E1-F1-F3-L-M-N-R-S-T-V-X-Z1	09321	A-B-C1-C2-E2-F-F3-H1-M-N-R-R1-S-V-Z1	09470	B-C-C1-C2-F3-M-R-S-U-Z1	09524	B-C-C2-F-F1-F3-R-R1-S-V
09284	A-B-C-C2-F1-F3-I3-L-M-N-R-S-T-V-Z	09330	A-B-C1-C2-D-E-E2-F-F1-F3-H-H1-M-R-R1-S-V-Z1	09487	A-B-C-C1-C2-E2-F1-F3-I3-L-M-N-R-R1-S-T-V-W-X-Z-Z1	09532	B-C-C2-F-F1-F3-R-R1-S-V
09285	A-B-C-E-E-1-F1-F3-H-I3-L-M-N-R-S-T-V-X-Z-Z1	09333	A-B-C-C1-C2-E2-F1-F3-H1-I3-M-N-R-R1-S-V-V1-Z-Z1	09488	A-B-C-C1-C2-E2-F1-F3-J-L-M-N-R-S-T-V-W-X-Z1	09533	B-V
09287	B-C2-E1-F1-F3-J-L-N-R-S-T-V-X-Z1	09343	A-B-C1-C2-F-F3-M-N-R-R1-S-V-Z1	09489	A-B-C-C1-C2-E2-F1-F3-L-M-N-R-R1-S-T-V-W-X-Z1	09534	B-F-F1-F3-R-R1-S-V
09288	A-B-C-C1-C2-E2-F1-F3-H-H1-J-L-M-N-R-R1-S-T-V-X-Z1	09348	A-B-C1-E2-F-F1-F3-H1-I3-M-N-R-R1-S-T-V-Z-Z1	09490	A-B-C1-C2-E2-F-F1-F3-H1-J-L-M-N-R-R1-S-T-V-X-Z1	09541	A-B-C-F-F3-M-N-S-V-Z1
09289	B-E2-F1-F3-H1-J-L-M-N-R-R1-S-T-U2-V-X-Z1			09491	A-B-C1-C2-E2-F1-F3-H1-J-L-M-N-R-R1-S-T-V-Z1	09542	A-B-C-F-F3-M-N-S-V-Z1
09290	A-B-F1-F3-J-L-M-N-R-S-T-U2-V-X-Z1			09494	B-C-C1-C2-F3-M-R-S-U-Z1	09543	A-B-C-F-F3-M-N-S-V-Z1
				09498	B-C-C1-C2-F1-F3-J-L-M-N-R-R1-S-T-V-X-Z1	09544	A-B-C-F-F3-M-N-S-V-Z1
						09545	A-B-C-F-F3-M-N-S-V-Z1
						09550	B-C-C2-F-F1-F3-R-R1-S-V
						09554	B-C-C2-F-F1-F3-R-R1-S-V
						09556	B-F-F1-R-R1-V
						09564	B-C-C2-F-F1-F3-R-R1-S-V
						09565	B-C-C2-F-F1-F3-R-R1-S-V
						09566	B-C-C2-E2-E3-F-F1-F3-R-R1-S-V
						09567	B-C-C2-E2-E3-F-F1-F3-R-R1-S-V

APO/ FPO/ DPO	See Restrictions	APO/ FPO/ DPO	See Restrictions	APO/ FPO/ DPO	See Restrictions	APO/ FPO/ DPO	See Restrictions
09568	B-C-C2-F-F1-F3-R-R1-S-V	09609	B-C-C2-F-F3-N-R-S-U-V-Z1	09709	B-C-C1-C2-E2-F1-F3-H-H1-J-L-N-R-R1-S-T-V-X-Z1	09738	A-B-C-C1-C2-F1-F3-J-L-M-N-R-R1-S-T-V-X-Z1
09569	B-C-C2-E2-E3-F-F1-F3-R-R1-S-V-Z1	09610	B-C-C2-F-F1-F3-M-R-S-U-V-Z1	09710	B-C-C1-F-F1-J-L-M-N-R-R1-T-U-V-Z1	09739	A-B-C-C1-C2-F1-F3-J-L-M-N-R-R1-S-T-V-X-Z1
09570	B-C-C2-F-F1-F3-R-R1-S-V	09613	B-C-C2-F-F3-N-R-S-U-V	09711	A-B-C-C2-E2-F-F1-F3-M-N-R-S-T-V-X	09741	A-B-C-C1-C2-E2-F1-F3-H1-J-L-M-N-R-R1-S-T-V-W-X-Y-Z1
09573	B-C-C2-E2-E3-F-F1-F3-R-R1-S-V-Z1	09614	A-B-C-C1-C2-E2-F1-F3-H1-J-L-M-N-R-R1-S-T-U-V-X-Z1	09712	A-B-C2-F-F3-H-R-S-U-V-Z1	09742	A-B-C-C1-C2-F1-F3-J-L-M-N-R-R1-S-T-V-X-Z1
09574	B-F-F1-R-R1-V	09618	B-C-C2-F-F3-R-S-U-Z1	09714	B-C-C1-C2-F-F3-M-R-R1-S-U	09743	A-B-C-C2-F-F3-H-N-R-S-V-Z-Z1
09575	B-C-C2-F-F1-F3-R-R1-S-V	09620	B-C-C2-F-F3-R-S-U-V-Z1	09715	B-F-F1-J-L-M-N-R-T-V-Z1	09744	A-B-C-C1-C2-F1-F3-J-L-M-N-R-R1-S-T-V-X-Z1
09576	B-C-C2-F-F1-F3-R-R1-S-V	09621	B-C-F-F3-R-U-Z1	09716	B-C-C2-F1-F3-J-L-M-N-R-R1-S-T-V-X-Z1	09745	A-B-C2-F-F1-F3-M-N-R-R1-S-V-Z1
09577	B-C-C2-F-F1-F3-R-R1-S-V	09622	B-C-C2-F-F3-R-S-U-Z1	09717	A-B-C-C2-F3-M-R-S-V-W-Z1	09748	A-B-C-C1-C2-F1-F3-J-L-M-N-R-R1-S-T-V-X-Z1
09578	B-C-C2-F-F1-F3-R-R1-S-V	09623	B-C-C2-F-F3-R-S-U-V-Z1	09718	B-F-F1-J-L-M-N-R-T-U-V-Z1	09749	A-B-C2-F-F3-H-N-R-S-U-V-Z1
09579	B-C-C2-F-F1-F3-R-R1-S-V	09624	B-C-C2-F1-F3-I3-L-M-N-R-R1-S-T-U-V-X-Z1	09719	B-C-C2-D-F3-M-R-S-U-V-Z1	09750	A-B-C-C1-C2-F1-F3-J-L-M-N-R-R1-S-T-V-X-Z1
09581	B-C-C2-F-F1-F3-R-R1-S-V	09625	B-C-C2-F-F3-N-R-S-U-Z1	09720	B-C2-F3-M-R-S-U-V-Z1	09751	B-C-C2-D-E-F-F3-H-M-R-S-U
09582	B-C-C2-F-F1-F3-R-R1-S-V	09627	B-C-C2-F-F3-R-S-U-V-Z1	09722	A-B-C-C2-F-F3-H-N-R-S-V-Z-Z1	09752	B-C-C2-D-F-F3-H-R-S-U
09583	B-C-C2-F-F1-F3-R-R1-S-V	09630	B-C-C2-F-F3-R-S-U-V	09723	B-C-C2-F1-F3-J-L-M-N-R-R1-S-T-V-X-Z1	09753	A-B-C-C1-C2-D-E-F1-F3-H-M-N-R-S-V-W-Z1
09586	B-C-C2-F-F1-F3-R-R1-S-V	09633	B-C-C2-D-F-F3-M-R-S-U-U1-U2-U3-V-Z1	09724	B-C-C1-C2-F-F3-M-R-R1-S-U	09754	A-B-C-C2-F-F3-H-N-R-S-V-Z-Z1
09587	B-C-C2-F-F1-F3-R-R1-S-V	09634	A-B-C2-F-F3-M-N-R-S-V	09725	A-B-C-C2-F-F3-H-N-R-S-V-V1-Z-Z1	09755	A-B-C-C1-C2-D-F-F1-F3-J-L-M-N-Q-R-R1-S-T-V-Z1
09588	B-C-C2-F-F1-F3-R-R1-S-V	09636	B-C-C2-F-F3-R-S-U-V-Z1	09726	B-F-F1-J-L-M-N-R-T-U-V-Z1	09756	A-B-E3-F-F1-F3-J-L-N-Q-R-R1-S-T-V-Z1
09590	B-C-C2-F-F1-F3-R-R1-S-V	09642	B-C-C2-F1-F3-J-L-M-N-R-S-T-U-V-X	09727	A-B-C-C1-C2-F1-F3-J-L-M-N-R-R1-S-T-V-X-Z1	09759	A-B-C-C1-C2-E2-F1-F3-J-L-M-N-R-R1-S-T-V-X-Z1
09591	B-C-C2-F-F1-F3-R-R1-S-V	09643	B-C-C2-F3-M-R-S-U-V-Z1	09728	A-B-C-C1-C2-F1-F3-J-L-M-N-R-R1-S-T-V-X-Z1	09761	B-C-C2-F-F1-F3-M-R-R1-S-V-Z1
09592	B-C-C2-F-F1-F3-R-R1-S-V	09645	B-C-C1-E1-E2-F-F1-F3-M-R-S-U-X-Z1	09729	B-C-C2-F-F3-N-R-R1-S-U-V-Z1	09762	A-B-C-C1-E3-F1-F3-J-L-M-N-R-R1-S-T-V-Y-Z1
09594	B-C-C1-C2-F-F1-F3-R-R1-S-V	09647	B-C2-F1-F3-M-N-R-S-U-Z1	09730	A-B-C-C1-C2-F1-F3-J-L-M-N-R-R1-S-T-V-X-Z1	09769	A-B-C-C1-E3-F1-F3-J-L-M-N-R-R1-S-T-V-Y-Z1
09595	B-C-C2-F-F1-F3-I3-J-R-R1-S-V-V1-Z1	09648	B-C2-F3-N-R-S-U-V-Z1	09731	A-B-C-C1-C2-F1-F3-J-L-M-N-R-R1-S-T-V-X-Z1	09777	A-B-C-C1-C2-E1-F1-F3-J-L-M-N-R-R1-S-T-V-X-Z1
09596	B-F-F1-R-R1-V	09649	B-C2-F3-N-R-S-U-Z1	09732	B-F-F3-N-S-V-Z-Z1	09780	A-B-C2-F-F3-H-N-R-S-V
09599	B-F-F1-R-R1-V	09701	A-B-C-C1-C2-F1-F3-J-L-M-N-R-R1-S-T-V-X-Z1	09733	B-F-F3-N-R-S-V-Z	09801	A-B-C1-E2-F-F3-H1-M-N-R-R1-S-V-Z1
09600	B-C-C2-F-F1-F3-R-S-U-Z1	09702	B-C-C2-F-F1-M-R-R1-S-U	09734	A-B-C-C1-C2-F1-F3-I3-J-L-M-N-R-R1-S-T-V-X-Z1		
09602	B-C-C2-F-F1-F3-N-R-S-U-V	09704	B-C-C2-F-F1-F3-R-R1-S-U2-V	09735	B-F3-N-R-S-V-Z-Z1		
09603	B-C-C2-F-F1-F3-R-S-U-V-Z1	09705	B-C-C1-C2-F1-F3-M-R-R1-S-U	09736	A-B-C-C1-C2-F1-F3-J-L-M-N-R-R1-S-T-V-X-Z1		
09604	B-C-C2-F-F1-F3-P-R-S-U-V-Z1	09706	B-C-C2-F3-M-N-R-S-U-V-Z1	09737	A-B-C-C1-C2-F1-F3-I3-J-L-M-N-R-R1-S-T-V-W-X-Y-Z-Z1		
09605	B-C-C2-D-F-F3-H-M-R-S-U-V	09707	B-C-C2-F1-F3-J-L-M-N-R-R1-S-T-V-X-Z1				
09606	B-C-C2-D-F-F3-H-M-R-S-U-V	09708	B-C-C1-C2-F-F3-M-R-R1-S-U				
09608	B-C-F-F3-N-R-S-U-V-Z1						

APO/ FPO/ DPO	See Restrictions	APO/ FPO/ DPO	See Restrictions	APO/ FPO/ DPO	See Restrictions	APO/ FPO/ DPO	See Restrictions
09802	A-B-C-C2-D-F1-F3-H-H1-I3-L-M-N-R-R1-S-T-V-W-X-Z-Z1	09826	A-B-C-C1-C2-E1-E2-E3-F1-F3-J-L-M-N-R-R1-S-T-V-W-X-Z1	09860	A-B-C-C2-F1-F3-J-L-M-N-R-R1-S-T-V-X-Z1	09977	B-F1-F3-J-L-M-N-R-S-T-U2-V-X-Z1
09803	A-B-C-C2-E-E2-E3-F1-F3-H-H1-J-M-N-R-R1-S-U-V-Z1	09827	A-B-F-F1-J-L-M-N-R-T-V-Z1	09862	A-B-C-C2-F1-F3-I3-L-M-N-R-R1-S-T-V-X-Z1	09978	B-C-C2-D-E1-F-F1-F3-H-H1-M-N-R-R1-S-T-X-Z1
09804	A-B-C-C2-F-F1-F3-M-N-R-S-V-Z1	09828	A-B-C-C1-C2-F1-F3-I3-L-M-N-R-R1-S-T-V-X-Z1	09864	A-B-C-C1-C2-E2-F1-F3-L-M-N-R-R1-S-T-V-W-X-Z1	09980	B-C-C1-C2-F1-F3-J-L-M-N-R-R1-S-T-V-X-Z1
09805	B-C-C2-E2-E3-F-F1-F3-R-R1-S-Z1	09829	B-C-N-R-V-Z1	09867	A-B-C-C1-C2-E2-F1-F3-I3-L-M-N-R-R1-S-T-V-W-X-Z1	09981	B-C-C1-C2-F1-F3-J-L-M-N-R-R1-S-T-V-X-Z1
09807	A-B-C1-C2-E2-F-F1-F3-H1-I3-M-N-R-R1-S-T-V-Z1	09830	B-C-F-F1-F3-J-L-M-N-R-R1-S-T-V-Z1	09869	A-B-C-C1-C2-E2-F1-F3-L-M-N-R-R1-S-T-V-W-X-Z1	09982	B-C-C1-C2-F1-F3-J-L-M-N-R-R1-S-T-V-X-Z1
09808	A-B-C-C1-C2-E2-F1-F3-H-H1-J-L-M-N-R-R1-S-T-V-X-Z1	09831	B-C-C1-C2-F1-F3-J-L-M-N-R-R1-S-T-V-X-Z1	09870	A-B-C-C1-C2-E2-F1-F3-H1-I3-L-M-N-R-R1-S-T-U4-V-X-Z1	09983	B-C-C1-C2-F1-F3-J-L-M-N-R-R1-S-T-V-X-Z1
09809	B-C-C1-C2-E3-F1-F3-J-L-M-N-R-S-T-V-X-Z1	09832	A-B-C-C1-C2-E2-E3-F1-F3-H-H1-J-M-N-R-R1-S-V-Z1	09873	A-B-C-C1-C2-E2-F1-F3-H1-I3-L-M-N-R-R1-S-T-U4-V-X-Z1	09984	B-C-C1-C2-F1-F3-J-L-M-N-R-R1-S-T-V-X-Z1
09810	A-B-C2-F-F1-F3-N-R-S-V-Z1	09833	B-C-C2-E2-E3-F-F1-F3-R-R1-S-U-Z1	09874	A-B-C-C1-C2-E2-F1-F3-H1-I3-L-M-N-R-R1-S-T-U4-V-X-Z1	34001	A-B-C-C1-C2-F1-F3-J-L-M-N-R-R1-S-T-V-X-Z1
09811	A-B-C-C2-E-E2-E3-F1-F3-H-H1-J-M-N-R-R1-S-U-V-Z1	09834	A-B-C-C1-C2-E2-E3-F-F1-F3-R-R1-S-U-Z1	09875	A-B-C-C1-C2-E2-F1-F3-H1-I3-L-M-N-R-R1-S-T-U4-V-X-Z1	34002	B-C-C1-C2-F1-F3-J-L-M-N-R-R1-S-T-V-X-Z1
09812	B-E2-E3-F-F1-I-J-L-N-R-T-U-V-Z1	09836	A-B-C-C1-C2-F1-F3-J-L-M-N-R-R1-S-T-V-X-Z1	09877	A-B-C-C2-E-E2-E3-F1-F3-H-H1-J-M-N-R-R1-S-U-V-Z1	34004	B-C-C1-C2-F1-F3-J-L-M-N-R-R1-S-T-V-X-Z1
09813	A-B-C-C1-C2-E2-E3-F1-F3-J-L-N-R-R1-S-T-V-X-Z1	09837	B-E2-E3-F1-F3-R-S-V-Z1	09880	A-B-C1-C2-E2-F-F1-F3-H1J-L--N-R-R1-S-T-U-V-Z1	34007	B-F-F1-H-J-M-N-R-R1-V-Z1
09814	B-C-C2-E2-E3-F1-F3-I3-J-L-M-N-R-R1-S-T-V-X-Z1	09838	B-C-C2-E2-E3-F-F1-F3-R-S-U-Z1	09888	B-C-C1-C2-E2-F-F1-F2-H1-N-R-R1-S-U2-V-Z1	34008	B-C-C1-C2-D-E1-F1-F3-H-H1-J-L-M-N-R-R1-S-T-V-X-Z
09815	A-B-C-C2-E-E2-E3-F1-F3-H-H1-J-M-N-R-R1-S-U-V-Z1	09842	A-B-C-C1-C2-E3-F1-F3-J-L-M-N-R-R1-S-T-V-X-Z1	09892	A-B-C-C1-C2-E2-F1-F3-J-L-M-N-R-R1-S-T-V-X-Z1	34009	B-C2-F-F1-F3-R-S-V
09816	A-B-C-C1-C2-E2-E3-F1-F3-J-L-M-N-R-R1-S-T-V-X-Z1	09844	A-B-C-C1-C2-F1-F3-J-L-M-N-R-R1-S-T-V-X-Z1	09895	A-B-C1-C2-E2-F-F1-F3-J-L-M-N-R-T-V-W-Z1	34010	B-C-C2-F-F1-F3-R-S-V
09817	A-B-C-C1-C2-E2-E3-F1-F3-H-H1-J-L-M-N-R-R1-S-T-V-X-Z1	09845	A-B-C-C1-C2-E3-F1-F3-J-L-M-N-R-R1-S-T-V-X-Z1	09902	A-B-C1-C2-E2-F-F3-H1-M-R-R1-S-V-Z1	34011	B-C-C1-C2-E2-F1-F3-J-L-M-N-R-R1-S-T-V-X-Z1
09818	A-B-C-C2-F-F3-M-R-S-V-Z1	09846	A-B-C-C1-C2-F1-F3-J-L-M-N-R-R1-S-T-V-X-Z1	09903	B-C-C1-C2-E2-F1-F3-N-R-S-V-Z1	34020	B-C-C1-C2-F1-F3-J-L-M-N-R-R1-S-T-V-X-Z1
09819	A-B-C-C1-C2-E2-F1-F3-H-H1-M-R-R1-S-V-Z1	09847	B-C-C2-F1-F3-J-L-M-N-R-R1-S-T-V-X-Z1	09904	B-C-C1-C2-E2-F1-F3-N-R-S-V-Z1	34021	B-C-C1-C2-F1-F3-J-L-M-N-R-R1-S-T-V-X-Z1
09820	A-B-C-C2-F1-F3-H-H1-J-L-M-N-R-R1-S-T-V-X-Z1	09848	A-B-C2-F-F3-M-R-S-V-Z1	09908	A-B-C2-F-F1-F3-N-R-R1-S-V-Z1	34022	B-C-C1-C2-F1-F3-J-L-M-N-R-R1-S-T-V-X-Z1
09821	A-B-C-C2-F-F3-N-R-S-V-Z1	09853	B-C-C1-C2-E2-F-F1-F3-H1-N-R-R1-S-U2-V	09909	A-B-C2-F-F1-F3-N-R-R1-S-V-V1-Z1	34023	B-C-C1-C2-F1-F3-J-L-M-N-R-R1-S-T-V-X-Z1
09822	A-B-C-C2-F-F3-M-R-S-V-Z1	09854	A-B-C-C1-C2-E2-F-F1-F3-H1-M-R-R1-S-U2-V-Z1	09974	B-F1-F3-J-L-M-N-R-S-T-U2-V-X-Z1	34024	B-C-C1-C2-F1-F3-J-L-M-N-R-R1-S-T-V-X-Z1
09823	A-B-C-C1-C2-F1-F3-J-L-M-N-R-R1-S-T-V-X-Z1	09855	A-B-C-C1-C2-E2-E3-F1-F3-H-H1-J-M-N-R-R1-S-U-V-Z1	09975	B-F1-F3-I3-L-M-N-R-S-T-U2-V-X-Z1	34025	B-F-F1-F3-J-L-M-N-R-R1-T-V-Z1
09824	A-B-C-C2-F-F3-M-R-S-V-Z1	09857	B-C-C1-C2-E2-E3-F1-F3-H-H1-J-M-N-R-R1-S-U-V-Z1	09976	B-F1-F3-J-L-M-N-R-S-T-U2-V-X-Z1	34030	B-C-C1-C2-F1-F3-J-L-M-N-R-R1-S-T-V-X-Z1
09825	A-B-C-C1-C2-F1-F3-J-L-M-N-R-R1-S-T-V-X-Z1	09858	B-C-C1-C2-E2-E3-F1-F3-H1-R-R1-S-U-Z1				

APO/ FPO/ DPO	See Restrictions	APO/ FPO/ DPO	See Restrictions	APO/ FPO/ DPO	See Restrictions	APO/ FPO/ DPO	See Restrictions
34031	B-C-C1-C2-F1-F3-J-L-M-N-R-R1-S-T-V-X-Z1	34085	B-C-C1-C2-E2-E3-F1-F3-H1-R-R1-S-T-V-V1	96258	B-C-C2-F- F1-F3-M-P-R-S	96339	A-B-C-C2-F-F3-M-N-R-S-U2-W
34032	B-C-C1-C2-F1-F3-J-L-M-N-R-R1-S-T-V-X-Z1	34086	B-C-C1-C2-E2-E3-F1-F3-H1-J-R-R1-S-T-V-V1	96260	A-B-C-C2-F- F1-F3-M-R-S-U	96343	A-B-F-F3-M-P-R-S-U2
34033	B-C-C1-C2-F1-F3-I3-L-M-N-R-S-T-V-X-Z1	34087	B-C-C2-E2-F-F1-F3-R-R1-S-V	96262	A-B-C2-F-F1-F3-R-S-U-V-Z1	96346	B-F-F1-F2-F3-H-M-R-S-W-Z1
34034	B-C-C1-C2-F1-F3-I3-L-M-N-R-R1-S-T-V-X-Z1	34088	B-C-C2-F-F1-F3-R-R1-S-V	96264	A-B-C-C2-F1-F3-R-S-U	96347	B-C2-F-F1-F2-F3-H-M-R-S-W-Z1
34035	B-C-C1-C2-F1-F3-H-J-L-M-N-R-R1-S-T-V-X-Z1	34089	B-C-C2-F-F1-F3-R-R1-S-V	96266	A-B-C-C2-F1-F3-R-S-U	96349	B-C-C2-F-F1-F2-F3-H-M-R-S-Z1
34036	B-C-C1-C2-F1-F3-J-L-M-N-R-R1-S-T-V-X-Z1	34090	B-C-C2-F-F1-F3-R-R1-S-V	96269	A-B-C-C2-F1-F2-F3-R-S-U-Z1	96350	B-F-F1-F2-F3-H-M-R-S-W-Z1
34037	B-C-C1-C2-F1-F3-H-J-L-M-N-R-R1-S-T-V-X-Z1	34091	B-C-C2-E2-E3-F-F1-F3-R-R1-S-V-Z1	96271	B-C-C2-F-F1-F3-M-P-R-S	96351	B-C-C2-F-F1-F2-F3-H-M-R-S-Z1
34039	B-C-C1-C2-F1-F3-J-L-M-N-R-R1-S-T-V-X-Z1	34092	B-C-C2-F-F1-F3-R-R1-S-V-Z1	96273	B-C-C2-F-F1-F3-M-R-S-U	96362	B-C2-F-F1-F2-F3-H-M-R-S-W-Z1
34041	B-C-C1-C2-F1-F3-J-L-M-N-R-R1-S-T-V-X-Z1	34093	B-C-C2-F-F1-F3-R-R1-S-V	96275	A-B-F-F1-F3-M-R-S-U	96365	B-C-C2-F3-M-R-S-W-V
34042	A-B-C-F-F1-F3-M-N-R-S-U-V-W-Z1	34094	B-F-F1-F3-R-R1-S-V	96276	A-B-C-C2-F1-F3-R-S-U	96367	B-C-C2-E1-F3-M-R-S-U2-W
34055	B-C-C1-C2-F1-F3-J-L-M-N-R-R1-S-T-V-X-Z1	34095	B-F-F1-R-R1-V	96278	A-B-C-C2-F1-F3-R-S-U	96368	B-C-C2-F3-M-R-S-W
34058	B-C2-F-F1-F2-F3-R-R1-S-V-Z1	96201	A-B-F-F1-F3-M-R-S-U	96283	A-B-F-F1-F3-S-U	96370	B-F-F1-F2-H-M-W-Z1
34060	B-C-C1-C2-E2-F1-F3-J-L-M-N-R-R1-S-T-V-X-Z1	96202	A-B-C-C2-F-F1-F3-M-R-S	96284	A-B-C-C2-F- F1-F3-M-R-S-U	96371	B-C-C2-F-F3-M-R-S-W
34066	B-C-C1-C2-F1-F3-I3-J-L-M-N-R-R1-S-T-V-X-Z1	96203	A-B-F-F1-F3-M-R-S-U	96297	A-B-C-C2-F-F1-F3-M-R-S-U	96372	B-C-C2-F-F3-M-R-S-W
34067	B-C-C1-C2-F1-F3-J-L-M-N-R-R1-S-T-V-X-Z1	96204	A-B-C-C2-F-F1-F3-M-R-S-U-U2	96301	A-B-C-C2-F-F3-M-N-R-S-U2-W	96373	B-C-C2-F-F3-M-R-S-W
34068	B-C-C1-C2-F1-F3-J-L-M-N-R-R1-S-T-V-X-Z1	96205	B-C-C2-F-F1-F3-M-P-R-S-U	96303	B-C-C1-C2-F1-F3-H-J-L-M-N-R-S-T-V-W-X-Z1	96374	B-C-C2-F-F3-M-R-S-W
34069	B-C-C1-C2-F1-F3-I3-J-L-M-N-R-R1-S-T-V-X-Z1	96206	A-B-C-C2-F-F1-F3-M-R-S-U	96306	B-F-F1-F2-F3-H-M-R-S-W-Z1	96375	B-C-C2-F-F3-M-R-S-W
34071	A-B-F1-F3-I3-L-M-N-R-S-T-V-W-X-Z1	96207	A-B-F-F1-F3-M-R-S-U-V	96309	B-C-C2-F-F1-F3-M-N-R-S-V-W	96376	B-C-C2-F-F3-M-R-S-W
34072	B-C-C2-F1-F3-J-L-M-N-R-S-T-V-X-Z1	96208	A-B-C-C2-F-F1-F3-M-R-S-U	96310	B-C-C2-F-F3-M-R-S-W	96377	B-C-C2-F-F3-M-R-S-W
34078	B-F1-F3-N-R-S-V-Z1	96209	A-B-C-C1-C2-F1-F3-J-L-M-N-R-S-T-U-V-X-Z1	96311	B-C-C2-F-F3-M-R-S-W	96378	B-C-C2-F-F3-M-R-S-W
34080	B-F-F1-R-R1-V	96210	A-B-C-C1-C2-F1-F3-I3-L-M-N-R-R1-S-T-V-X-Z1	96315	B-C-C2-F-F3-M-R-S-W	96379	B-C-C2-F-F3-M-R-S-W
34081	B-F-F1-R-R1-V	96212	B-F-F1-F2-H-M-W-Z1	96319	B-C-C2-F3-M-R-S-W	96380	B-C-C2-F-F3-M-R-S-W
34082	B-F-F1-R-R1-V	96213	A-B-C-C2-F1-F3-N-R-S	96321	B-F-F1-F2-F3-H-M-R-S-W-Z1	96382	B-C-C2-F-F3-M-R-S-W
34083	B-F-F1-R-R1-V	96214	A-B-C-C2-F1-F3-N-R-S-U	96322	B-F-F1-F2-F3-H-M-R-S-W-Z1	96384	B-C-C2-F-F3-M-R-S-W
34084	B-F-F1-R-R1-V	96215	A-B-C-C2-F-F1-F3-M-R-S-U	96326	B-C-C2-F-F3-M-R-S-W	96385	B-C-C2-F-F3-M-R-S-W
		96218	A-B-C-C2-F-F1-F3-M-R-S-U	96328	B-C-C2-F3-M-R-S-W	96386	B-C-C2-F-F3-M-R-S-W
		96224	A-B-C-C2-F-F1-F3-M-R-S-U	96331	A-B-C-C2-F-F1-F3-J-L-M-N-R-S-U2-W	96387	B-C-C2-F-F3-M-R-S-W
		96251	A-B-C-C2-F-F1-F3-M-R-S-U	96336	B-C-C2-F3-M-R-S-V-W	96388	B-C-C2-F-F3-M-R-S-W
		96257	A-B-F-F1-F3-S-U	96337	B-C-C2-F-F1-F3-M-R-R1-S-W	96389	B-C-C2-F-F3-M-R-S-W
				96338	A-B-C-C2-F-F3-M-R-S-U2-W	96401	B-C-F-F3-N-R-S-V-V1-Z1

APO/ FPO/ DPO	See Restrictions	APO/ FPO/ DPO	See Restrictions	APO/ FPO/ DPO	See Restrictions	APO/ FPO/ DPO	See Restrictions
96502	A-B-C-C1-C2-F-F1-F3-J-M-N-R-R1-S-T-U-V	96548	A-B-C-C2-F-F1-F3-H-M-R-S-U	96611	B-C-C2-F-F3-H1-R-R1-S-U2-V-Z1	96667	B-C-C2-F-F1-F3-R-R1-S-V
96504	A-B-C-C1-C2-F1-F3-I3-L-M-N-R-R1-S-T-V-W-X-Z-Z1	96549	A-B-C-C1-C2-F1-F3-H-J-L-M-N-R-R1-S-T-V-X-Z1	96612	B-C-C2-F-F3-H1-R-R1-S-U2-V-Z1	96668	B-C-C2-F-F1-F3-R-R1-S-V
96505	A-B-C-C1-C2-F1-F3-I3-L-M-N-R-R1-S-T-V-W-X-Z-Z1	96550	A-B-H-M-N-U-V-Z1	96613	B-C-C2-F-F3-H1-R-R1-S-U2-V-Z1	96669	B-C-C2-F-F1-F3-R-R1-S-V
96506	B-C-C2-D-E1-E2-F-F1-F3-H-H1-M-N-R-S-T-Z1	96551	A-B-C-C1-C2-F1-F3-H-J-L-M-N-R-R1-S-T-V-X-Z1	96615	B-F-F1-R-R1-V	96670	B-C-C2-F-F1-F3-R-R1-S-V
96507	A-B-C-C1-C2-F1-F3-H-J-L-M-N-R-S-T-V-X-Z1	96552	B-Z1	96616	B-C2-F-F1-F3-R-R1-S-V	96671	B-C-C2-F-F1-F3-R-R1-S-V
96511	B-I3-N-V	96553	A-B-C-C2-F-F1-F3-H-M-N-R-S-U	96619	B-C-C2-F1-F3-R-S-V	96672	B-C-C2-F-F1-F3-R-R1-S-V
96515	B-C-D-E1-F-F1-F3-H-H1-M-N-R-S-T-Z1	96554	A-B-C-C1-C2-F1-F3-H-J-L-M-N-R-R1-S-T-V-X-Z1	96620	B-C-C2-F-F1-F3-R-R1-S-V	96673	B-C-C2-F-F1-F3-R-R1-S-V
96516	B-C-C2-D-E1-E2-F-F1-F3-H-H1-M-N-R-S-T-Z1	96555	A-B-C-C2-F-F1-F3-M-R-S-U2-V	96628	B-C-C2-F-F1-F3-R-R1-S-V	96674	B-C-C2-F-F1-F3-R-R1-S-V
96517	B-C-D-E1-E2-F-F1-F3-H-H1-M-N-R-T-U-V-Z1	96557	A-B-C-C2-F-F1-F3-M-R-S-U2-V	96629	B-C-C2-F-F1-F3-R-R1-S-V	96675	B-C-C2-F-F1-F3-R-R1-S-V
96520	B-F-N-U3-V	96562	A-B-C-C1-C2-D-E2-E3-F1-F3-H-H1-I3-L-M-N-R-R1-S-T-V-X-Z-Z1	96632	B-C-C2-F-F1-F3-R-R1-S-V	96677	B-C-C2-F-F1-F3-R-R1-S-V
96521	B-C-C1-C2-F-F1-F3-J-L-M-N-R-R1-S-T-V-X-Z1	96577	A-B-C2-F-F3-H-M-N-R-S-U	96633	B-V	96678	B-C-C2-F-F1-F3-R-R1-S-V
96530	A-B-C-C1-C2-F1-F3-H-H1-J-L-M-N-R-R1-S-T-V-X-Z1	96578	B-C-C2-F1-F3-H-J-N-R-S	96641	B-V	96679	B-C-C2-F-F1-F3-R-R1-S-V
96531	A-B-C-C2-F-F1-F3-H-M-N-R-S-U-V	96595	B-F-F3-R-S-V-Z1	96642	B-V	96681	B-C-C2-F-F1-F3-R-S-V
96532	A-B-C-C1-C2-F1-F3-H-J-L-M-N-R-R1-S-T-V-X-Z1	96598	B-C2-F3-I3-N-R-S-V-V1	96643	B-F-F1-F3-R-R1-S-V	96682	B-C-C2-F-F1-F3-R-R1-S-V
96534	A-B-C-C2-F-F1-F2-F3-R-R1-S-U-V-Z1	96599	B-C2-F3-N-R-S-V	96644	B-V	96683	B-C-C2-F-F1-F3-R-R1-S-V
96535	A-B-C-C1-C2-F1-F3-J-L-M-N-R-R1-S-T-V-X-Z1	96601	B-V	96645	B-V	96686	B-C-C2-F-F1-F3-R-R1-S-V
96537	B-V-Z1	96602	B-V	96649	B-C-C2-F-F1-F3-R-R1-S-V	96691	B-C-C2-F-F1-F3-R-R1-S-V
96540	B-F1-F2-F3-S-V-Z1	96603	B-V	96650	B-F-F1-R-R1-V	96692	B-C-C2-E2-F-F1-F3-R-R1-S-V
96542	B-C-C2-F-F1-F2-F3-R-S	96604	B-V	96657	B-C-C2-F-F1-F3-R-R1-S-V	96693	B-C-C2-F-F1-F3-R-R1-S-V
96543	B-C-C2-F-F1-F2-F3-P-R-S	96605	B-V	96660	B-C-C2-F-F1-F3-R-R1-S-V	96694	B-C-C2-F-F1-F3-I3-J-R-R1-S-V-Z
		96606	B-C-C2-F-F3-M-R-S-V-W	96661	B-C-C2-F-F1-F3-R-R1-S-V	96695	B-C-C2-F-F1-F3-R-R1-S-V
		96607	B-V	96662	B-C-C2-F-F1-F3-R-R1-S-V	96696	B-F-F1-R-R1-V
		96608	B-E2-F-H1-R1-U2-V-Z1	96663	B-C-C2-F-F1-F3-R-R1-S-V	96698	B-C-C2-F-F1-F3-R-R1-S-V
		96609	B-E2-F-H1-R1-U2-V-Z1	96664	B-C-C2-F-F1-F3-R-R1-S-V		
		96610	B-C-C2-F-F3-H1-R-R1-S-U2-V-Z1	96665	B-C-C2-F-F1-F3-R-R1-S-V		
				96666	B-C-C2-F-F1-F3-R-R1-S-V		

RESTRICTIONS

LEGEND

PS Form 2976, *Customs — CN 22 (Old C 1) and Sender's Declaration*
 PS Form 2976-A, *Customs Declaration and Dispatch Note*
 PS Form 2976-B, *Priority Mail Express International Shipping Label and Customs Form*

ATF = Bureau of Alcohol, Tobacco, Firearms, and Explosives
 Box C = Department of State (DOS) contractor personnel
 Box R = Retired military personnel
 DPO = Diplomatic Post Office
 MPO = Military Post Office
 PACT = Prevent All Cigarette Trafficking Act
 PAL = Parcel Airlift
 PMEMS = Priority Mail Express Military Service
 PUB 52 = Publication 52, *Hazardous, Restricted, and Perishable Mail*
 SAM = Space Available Mail
 USDA = United States Department of Agriculture

Note: Mail order catalogs are prohibited as SAM or PAL mail.

A. Securities, currency, or precious metals, including in their raw, unmanufactured state, are prohibited. Official Mail shipments are exempt from this restriction.

A1. Reserved for future use.

A2. Reserved for future use.

B. Other than for PMEMS and the exceptions listed below, a customs declaration PS Form 2976 or PS Form 2976-A is required for all items weighing 16 ounces or more, and for all items (regardless of weight) containing potentially dutiable mail contents (e.g., merchandise or goods) addressed to or from this ZIP Code. Other than the exceptions listed below, all PMEMS mailpieces (regardless of mail contents or weight) addressed to or from this ZIP Code must bear a properly completed PS Form 2976-B. The surface area of the address side of the mailpiece must be large enough to contain the applicable customs declaration. The following exceptions apply to known mailers, who for this purpose are defined as follows:

- Business mailers who enter volume mailings through business mail entry units or other bulk mail acceptance locations, pay postage through advance deposit accounts, use permit imprints for postage payment, and submit completed postage statements at the time of entry that certify that the mailpieces contain no dangerous materials that are prohibited by postal regulations. Such business mailers are exempt from providing customs documentation on non-dutiable letters and printed matter.
- All federal, state, and local government agencies whose mailings are regarded as "Official Mail." Such agencies are exempt from providing customs documentation, except for any items addressed to an MPO or DPO to which restriction "B2" applies.

B2. All federal, state, and local government agencies must complete customs documentation when sending potentially dutiable mail addressed to or from this MPO or DPO.

C. Cigarettes and other tobacco products, including tobacco leaves, chewing and pipe tobacco, snuff, and cigars are prohibited, including those that are authorized in Publication 52 under PACT.

C1. Obscene and horror articles, images, prints, paintings, cards, films, videotapes, comic books, etc., are prohibited.

C2. E-cigarettes and related products (e.g., nicotine liquids, e-liquids, parts, or supplies) are prohibited.

D. Coffee is prohibited.

E. Medicines (prescription, over-the-counter, vitamins, and supplements) are prohibited when mailed to individuals for human or animal use. This prohibition does not apply when medicines are sent as Official Mail only between specifically designated agencies such as pharmaceutical distributors, hospitals, clinics, and pharmacies.

E1. Mailers are responsible to ensure that all medicines and vaccines conform to host nation laws.

E2. Any matter depicting nude or seminude persons, pornographic, or sexual items are prohibited. Non-authorized political materials are prohibited. Religious materials contrary to the Islamic faith are prohibited in bulk quantities, but individual items for the personal use of the addressee are permissible.

E3. Radio transceivers, cordless/cellular telephones, global positioning systems, scanners, base stations, and handheld transmitters are prohibited.

F. Firearms of any type are prohibited, except firearms mailed to or by official U.S. government agencies. This restriction does not apply to firearms mailed from this MPO ZIP Code, provided ATF and USPS regulations are met. Antique firearms do not require an ATF form.

F1. Weapons of any type are prohibited.

F2. Mailing firearms to or from this MPO ZIP Code is restricted to one shotgun and one single shot .22 caliber rifle per individual.

F3. Replica weapons and inert explosive devices (such as grenades) and weapons parts are prohibited.

G. Parcels of any class are prohibited.

H. Meats, including preserved meats, bones, skin, hair, feathers, horns or hoofs of hoofed animals, and wool samples whether hermetically sealed or not, are prohibited.

H1. Pork or pork by-products are prohibited.

I. Reserved for future use.

I1. Reserved for future use.

I2. Reserved for future use.

I3. Mail of all classes must fit in a mail sack. Mail may not exceed the following dimensions:

- Maximum length 27 inches.
- Maximum width 14 inches.
- Maximum height 14 inches.

J. Standard Post and Parcel Select parcels may not exceed 108 inches in length and girth combined.

K. Reserved for future use.

L. All Official Mail is prohibited.

M. Fruits, vegetables, live animals, and live plants are prohibited.

N. Registered Mail service is prohibited.

O. Reserved for future use.

P. Official Mail only.

Q. Mail may not exceed 66 pounds, and size is limited to 42 inches maximum length and 72 inches maximum length and girth combined.

R. All alcoholic beverages, including those mailable under Publication 52, Part 421, are prohibited.

R1. Materials used in the production of alcoholic beverages (i.e., distilling material, hops, malts, yeast, etc.) are prohibited.

S. Synthetic cannabinoids used to stimulate the central nervous system commonly known as "synthetic marijuana," "K2," or "Spice" are prohibited.

T. Mailings of household shipments and case lots of food to or from an MPO require military transportation office approval prior to mailing. Mailings to or from a DPO require pre-approval from the Diplomatic Pouch and Mail Director.

U. Mail addressed to Retirees (Box R) is limited to 16 ounces and up to a 90-day supply of TRICARE medications. This restriction does not apply to mail endorsed "Free Matter for the Blind or Handicapped."

U1. Mail is limited to First-Class Mail items, including audio and video media, weighing 13 ounces or less. This limitation does not apply to Official Mail.

U2. Retirees (Box R) are not authorized mail service.

U3. Reserved for future use.

U4. Mail addressed to Box C is limited to 2 lbs.

V. PMEMS is not available.

V1. Electronic Delivery status information for Extra Services is not available on *USPS.com*. Manual record of delivery may be available upon request.

W. Hermetically sealed packages of meat products bearing USDA certification, such as dried beef, salami, and sausage, may be mailed. 200 grams of tobacco per parcel are permitted duty free.

X. Cremated remains are prohibited.

Y. Mail is limited to First-Class Mail and Priority Mail items only. This restriction also applies to Official Mail.

Z. No outside pieces (OSPs).

Z1. The following restriction is applicable only to International Service Centers (ISC)/Exchange Offices. An Anti-Pilferage Seal (Item No O817E or O818A) is required on all pouches and sacks.

Thrift Savings Plan Fact Sheet

ANNUAL RETURNS	G Fund	F Fund	U.S. Aggregate Index	C Fund	S&P 500 Stock Index	S Fund	Dow Jones U.S. Completion TSM Index	I Fund	EAFE Stock Index
2015	2.04	0.91	0.55	1.46	1.38	-2.92	-3.42	-0.51	-0.81
2016	1.82	2.91	2.65	12.01	11.96	16.35	15.75	2.10	1.00
2017	2.33	3.82	3.54	21.82	21.83	18.22	18.12	25.42	25.03
2018	2.91	0.15	0.01	-4.41	-4.38	-9.26	-9.57	-13.43	-13.79
2019	2.24	8.68	8.72	31.45	31.49	27.97	27.94	22.47	22.01
2020	0.97	7.50	7.51	18.31	18.40	31.85	32.17	8.17	7.82
2021	1.38	-1.46	-1.54	28.68	28.71	12.45	12.35	11.45	11.26
2022	2.98	-12.83	-13.01	-18.13	-18.11	-26.26	-26.54	-13.94	-14.45
2023	4.22	5.58	5.53	26.25	26.29	25.30	24.97	18.38	18.24

MONTHLY RETURNS	G Fund	F Fund	U.S. Aggregate Index	C Fund	S&P 500 Stock Index	S * Fund	Dow Jones U.S. Completion TSM Index	I * Fund	EAFE Stock Index
2023									
Mar	0.35	2.55	2.54	3.67	3.67	-2.90	-2.90	3.11	2.48
Apr	0.30	0.60	0.61	1.56	1.56	-2.18	-2.18	2.87	2.82
May	0.31	-1.10	-1.09	0.43	0.43	0.44	0.44	-4.01	4.23
June	0.32	-0.36	-0.36	6.61	6.61	8.31	8.30	4.57	4.55
July	0.34	-0.07	-0.07	3.21	3.21	5.91	5.89	2.82	3.24
Aug	0.35	-0.63	-0.64	-1.58	-1.59	-4.06	-4.07	-3.90	-3.83
Sept	0.35	-2.54	-2.54	-4.77	-4.77	-4.90	-4.89	-3.51	-3.42
Oct	0.40	-1.58	-1.58	-2.10	-2.10	-6.26	-6.26	-3.22	-4.05
Nov	0.41	4.51	4.53	9.12	9.13	11.19	10.99	8.54	9.28
Dec	0.39	3.72	3.83	4.54	4.54	10.45	10.43	5.39	5.31
2024									
Jan	0.34	-0.19	-0.27	1.68	1.68	-2.41	-2.40	-0.22	0.58
Feb	0.33	-1.41	-1.41	5.34	5.34	6.03	6.05	2.74	1.83
YTD	0.67	-1.60	-1.68	7.10	7.11	3.48	3.50	2.51	2.42

The G Fund is managed internally by the Federal Retirement Thrift Investment Board. Assets of the F, C, S, and I Funds are managed externally. The Board currently has contracts with BlackRock Institutional Trust Company, N.A., to manage the F, C, S, and I Fund assets. The F, C, S, and I Funds invest in commingled trust funds, in which the assets of tax-deferred employee benefit plans are combined and invested together. The F, C, S, and I Funds and the BlackRock funds are passively managed index funds.

Future performance of the funds will vary and may be significantly different from the returns shown above. See the *Summary of the*

Thrift Savings Plan for detailed information about the funds and their investment risks. The monthly returns of the TSP Funds represent net earnings for the month after deduction of accrued administrative expenses and, except for the G Fund, after deduction of trading costs and accrued investment management fees as well. The returns for the four indexes shown do not include any of these deductions.

* Implemented May 2001.

See next page for L Funds.

L Funds

Annual Returns	L Income	L 2020	L 2030	L 2040	L 2050
2015	1.85	1.35	1.04	0.73	0.45
2016	3.58	5.47	7.07	7.90	8.65
2017	6.19	9.86	14.54	16.77	18.81
2018	0.71	-0.36	-3.58	-4.89	-6.02
2019	7.60	9.38	17.60	20.69	23.33
2020	5.15		11.26	13.16	14.79

Annual Returns	L Income	L 2025	L 2030	L 2035	L 2040	L 2045	L 2050	L 2055	L 2060	L 2065
2021	5.42	9.75	12.37	13.43	14.51	15.40	16.34	19.90	19.90	19.90
2022	-2.70	-6.72	-10.32	-11.65	-12.90	-14.03	-15.05	-17.60	-17.61	-17.62
2023	8.99	11.25	15.76	16.91	18.04	19.03	20.00	23.31	23.30	23.31

Monthly Returns	L Income	L 2025	L 2030	L 2035	L 2040	L 2045	L 2050	L 2055	L 2060	L 2065
2023										
Mar	1.05	1.38	1.87	2.01	2.14	2.24	2.34	2.54	2.55	2.55
Apr	0.63	0.79	1.07	1.13	1.20	1.25	1.31	1.48	1.48	1.48
May	-0.12	-0.30	-0.63	-0.72	-0.81	-0.89	-0.96	-1.12	-1.12	-1.12
June	1.70	2.42	3.74	4.07	4.41	4.71	5.00	6.07	6.07	6.07
July	1.09	1.44	2.18	2.36	2.54	2.70	2.86	3.42	3.42	3.42
Aug	-0.46	-0.81	-1.55	-1.74	-1.92	-2.09	-2.24	-2.71	-2.71	-2.71
Sept	-1.00	-1.53	-2.66	-2.96	-3.24	-3.48	-3.71	-4.31	-4.31	-4.32
Oct	-0.56	-0.90	-1.77	-1.99	-2.20	-2.39	-2.57	-3.04	-3.05	-3.05
Nov	2.81	3.67	5.88	6.44	6.97	7.44	7.88	9.14	9.14	9.14
Dec	1.87	2.39	3.71	4.05	4.37	4.66	4.93	5.61	5.61	5.62
2024										
Jan	0.36	0.37	0.41	0.41	0.41	0.40	0.41	0.45	0.45	0.45
Feb	1.29	1.63	2.74	2.96	3.20	3.41	3.62	4.48	4.48	4.48
YTD	1.66	2.01	3.15	3.38	3.62	3.83	4.04	4.95	4.95	4.95

The TSP added six new L Funds that have 5-year increments rather than the previous 10-year increments.

Freely Associated States Restrictions

We list the mailing restrictions for Freely Associated States (FAS) in the Pull-Out section of the *Postal Bulletin*. All FAS Restrictions will be updated periodically.

Freely Associated States

Mail addressed to freely associated states is subject to certain conditions or restrictions of mailing regarding content, preparation, and handling. The following FAS Restrictions table outlines these conditions as listed by each affected FAS ZIP Code™ through the use of footnoted mailing restrictions codes (see the [Restrictions](#) following the table). For more information on available extra services for FAS destinations, see *Mailing Standards of the United States Postal Service, Domestic Mail Manual (DMM®)*, part 503.

Acceptance clerks must use the table with the Retail System Software terminal to determine which FAS ZIP Codes are active and which conditions of mailing apply.

FAS Restrictions Table

FAS Table	See Restrictions
96939	A, B
96940	A, B
96941	A, B
96942	A, B
96943	A, B
96944	A, B
96960	A, B
96970	A, B, D
Marshall Islands	C
Federated States of Micronesia	C

RESTRICTIONS LEGEND

PS Form 2976, *Customs Declaration CN 22 – Sender's Declaration*

PS Form 2976-A, *Customs Declaration and Dispatch Note*

FAS = Freely Associated State

- A.** Bank currency (coin and paper) is prohibited.
- B.** Signature Confirmation, Signature Confirmation Restricted Delivery, Adult Signature Requested, Adult Signature Restricted Delivery, Certified Mail Adult Signature Required, and Certified Mail Adult Signature Restricted Delivery not available.
- C.** Collect on Delivery is prohibited.
- D.** Betel nut (Areca catechu) is prohibited.

— *Asia-Pacific Relations,
Global Business, 3-21-24*

Labeling List Changes (continued)

L606 5-Digit Scheme — Standard Mail, First-Class Mail, and Package Services Parcels

Changes

Column A Destination ZIP Codes	Column B Label Container To (Change From)	Column B Label Container To (Change To)
04222	LISBON ME 04250	DURHAM ME 04222
04280	LISBON ME 04250	DURHAM ME 04222
08102	CAMDEN NJ 08102	CAMDEN NJ 08101
08103	CAMDEN NJ 08102	CAMDEN NJ 08101
34474	OCALA FL 34473	OCALA FL 34474
34476	OCALA FL 34481	OCALA FL 34476
34477	OCALA FL 34481	OCALA FL 34476
34482	OCALA FL 34473	OCALA FL 34474
97238	PORTLAND OR 97238	PORTLAND OR 97220
97250	PORTLAND OR 97238	PORTLAND OR 97220
97251	PORTLAND OR 97238	PORTLAND OR 97220
97252	PORTLAND OR 97238	PORTLAND OR 97220
97253	PORTLAND OR 97238	PORTLAND OR 97220

Newly Added

Column A Destination ZIP Codes	Column B Label Container To (Added To)
08035	HADDON HEIGHTS NJ 08035
08059	HADDON HEIGHTS NJ 08035
08093	BELLMAWR NJ 08031
08101	CAMDEN NJ 08101
97220	PORTLAND OR 97220

Deleted

Column A Destination ZIP Codes	Column B Label Container To (Deleted From)
03766	LEBANON NH 03766
03784	LEBANON NH 03766
04038	GORHAM ME 04038
04084	GORHAM ME 04038
04093	GORHAM ME 04038
08104	CAMDEN NJ 08104
08105	CAMDEN NJ 08104
08108	COLLINGSWOOD NJ 08108
08109	COLLINGSWOOD NJ 08108

Column A Destination ZIP Codes	Column B Label Container To (Deleted From)
08110	COLLINGSWOOD NJ 08108
13084	TULLY NY 13159
13159	TULLY NY 13159
26215	ROCK CAVE WV 26234
26222	ROCK CAVE WV 26234
26228	ROCK CAVE WV 26234
26234	ROCK CAVE WV 26234
26236	ROCK CAVE WV 26234
34473	OCALA FL 34473
34481	OCALA FL 34481
37877	MORRISTOWN TN 37813
64739	GARDEN CITY MO 64747
64747	GARDEN CITY MO 64747
95695	WOODLAND CA 95695
95776	WOODLAND CA 95695

L607 3-Digit ZIP Code Sort Option for Drop-Ship Mailers

* * * * *

Deleted

Column A Destination ZIP Codes	Column B Label To (Deleted From)
91495	SANTA CLARITA CA 914

* * * * *

L801 AADCs — Letter-Size Mailings

Changes

Column A Destination ZIP Codes	Column B Label To (Change From)	Column B Label To (Change To)
770	AADC NORTH HOUSTON TX 773	AADC SOUTH HOUSTON TX 774
772	AADC NORTH HOUSTON TX 773	AADC SOUTH HOUSTON TX 774
774	AADC NORTH HOUSTON TX 773	AADC SOUTH HOUSTON TX 774

— Logistics, Network Development, and Support, Network Operations, 3-21-24

Brighten Someone's Day with

Thinking of You

Forever® Stamps and Personal Message Stickers



ON SALE NATIONWIDE: AUGUST 11, 2023

Environmental Management

Required Monthly Inspections for Aboveground Storage Tanks

Aboveground Storage Tanks (ASTs) must be inspected at least once a month to comply with regulatory requirements and Postal Service™ policy (see *Administrative Support Manual*, Chapter 69, “Environmental Management and Compliance”).

The monthly inspection requirement applies to ASTs of any size that contain liquid hazardous materials such as:

- New and used oil.
- Gasoline, including diesel fuel.
- New and used antifreeze.
- Windshield washer fluid (if flammable).
- Wash soap (if corrosive).
- Diesel exhaust fluid.
- Heating oil.

These inspections help prevent the release of oil or other hazardous materials into the environment. The site installation head, their designee, or maintenance capable sites must:

- Conduct and document a monthly visual inspection of each AST. Use the AST Inspection Form at blue.usps.gov/sustainability/environmental/_docs/forms/monthlytankinspection.doc, eMARS, or the Safety and Health Management Tool (SHMT) to document completion of the inspection and associated corrective maintenance activities.
- Ensure each AST has a label that identifies contents and volume.

- Address any issues identified during the inspection.
- Promptly address spills and respond with appropriate actions.

Sites that store oil volumes greater than 1,320 gallons have a dedicated Spill Prevention, Control, and Countermeasure (SPCC) plan. Sites with SPCC plans must use the inspection log in the site-specific SPCC plan.

For specific information about managing ASTs (including inspection forms), use the following resources:

- Environmental Compliance Bulletin: Aboveground Storage Tank Management (blue.usps.gov/sustainability/environmental/_pdf/ecb-ast.pdf).
- Maintenance Management Order: Aboveground Storage Tanks (blue.usps.gov/sustainability/environmental/_pdf/mmo-002-23.pdf).
- A brief video available for credit in HERO provides basic instruction on how to inspect ASTs titled “Aboveground Storage Tank Inspections.”

For more information about environmental compliance, review the Environmental Affairs website at blue.usps.gov/sustainability/environmental.htm or consult your designated USPS Environmental Specialist at blue.usps.gov/sustainability/regional-environmental-compliance-all.htm.

— *Environmental Affairs and Corporate Sustainability, Corporate Affairs, 3-21-24*

Information Security

CyberSafe Training for Contractors Course Due by April 17

It's time for United States Postal Service® (USPS®) contractors to do their part in protecting critical Postal Service™ data by completing the mandatory, annual CyberSafe training. The deadline to complete the course is **April 17, 2024**.

Threats to digital information are growing in frequency and sophistication worldwide. Protecting USPS employees, customers, and supplier data from these threats is a priority for the Postal Service. Everyone has a role to play in protecting this data.

By taking the assigned CyberSafe training course this year, contractors will learn how to protect critical USPS information from cyber threats.

The course — CyberSafe Fundamentals — provides the fundamental skills and knowledge needed to adhere to cybersecurity policy for the protection of USPS electronic

information. The training also provides best practices for handling sensitive and sensitive-enhanced information to keep USPS electronic data secure.

This year, we are offering a one-time test out option for those who are already practicing effective cybersecurity.

Contractors can access the course now through MyHR at usps.csod.com/LMS/catalog/Welcome.aspx?tab_page_id=-67&tab_id=-1.

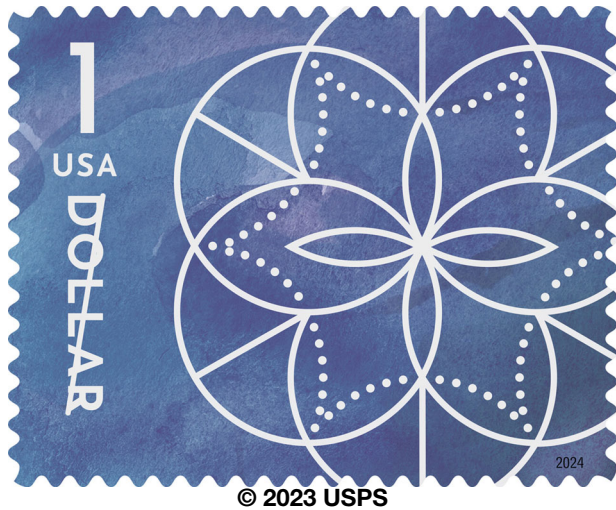
Contractors who do not meet the deadline are subject to limited ACE system access until the course is completed.

Visit the CyberSafe training page on Blue (blue.usps.gov/cyber/training.htm) or contact CyberSafeComms@usps.gov for more information.

— *Corporate Information Security Office, Chief Information Security Officer, 3-21-24*

Stamp Services

Stamp Announcement 24-16: \$1 Floral Geometry Stamp



On April 26, 2024, in Burlingame, CA, the United States Postal Service® will issue the \$1 *Floral Geometry* definitive stamp in one design, in a pressure-sensitive adhesive (PSA) pane of 10 stamps (Item 121800). This stamp will go on sale nationwide April 26, 2024, and must not be sold or canceled before the first-day-of-issue.

In 2024, a new *Floral Geometry* stamp denominated at \$1 will be available for purchase, complementing the similarly designed \$2 and \$5 stamps issued in 2022, and the \$10 stamp issued in 2023. The stamp art features a series of overlapping geometric shapes that mimic the symmetry of floral patterns found in nature. As the stamp denominations rise (\$1 to \$10), the designs become more complex. The watercolor backgrounds and foil-stamped designs and typography create a sophisticated look. The stamps were designed and created by the firm Spaeth Hill. Antonio Alcalá was the art director.

Availability to Post Offices: Item 121800, \$1 Floral Geometry Pane of 10 Stamps

Stamp Fulfillment Services will not make an automatic push distribution to Post Offices. Post Offices may begin ordering stamps before the first-day-of-issue through SFS Web at sfsweb.usps.gov/sfsweb.

How to Order the First-Day-of-Issue Postmark

Customers have 120 days to obtain the first-day-of-issue postmark by mail. They may purchase new stamps at their local Post Office® or at The Postal Store® website at store.usps.com/store/home. They must affix the stamps to envelopes of their choice, address the envelopes (to themselves or others), and place them in a larger envelope addressed to:

FDOI – \$1 Floral Geometry Stamp
USPS Stamp Fulfillment Services
8300 NE Underground Drive, Suite 300
Kansas City, MO 64144-9900

After applying the first-day-of-issue postmark, the Postal Service™ will return the envelopes through the mail. There is no charge for the postmark up to a quantity of 50. There is a 5-cent charge for each additional postmark over 50. All orders must be postmarked by August 26, 2024.

How to Order First-Day Covers

The Postal Service also offers first-day covers for new stamp issues and Postal Service stationery items postmarked with the official first-day-of-issue cancellation. Each item has an individual catalog number and is offered in the *USA Philatelic* catalog and online at store.usps.com/store/home. Customers may register to receive a free *USA Philatelic* catalog online at usps.com/philatelic.

Locally produced items are not authorized. Only merchandise that has been approved and assigned an item number by Headquarters Retail Marketing may be produced and sold.

Issue:	\$1 <i>Floral Geometry</i> Stamp
Item Number:	121800
Denomination & Type of Issue:	\$1 Definitive
Format:	Pane of 10 (1 design)
Series:	N/A
Issue Date & City:	April 26, 2024, Burlingame, CA 94010
Art Director:	Antonio Alcalá, Alexandria, VA
Designer:	Spaeth Hill, Alexandria, VA
Typographer:	Spaeth Hill, Alexandria, VA
Artist:	Spaeth Hill, Alexandria, VA
Modeler:	Sandra Lane / Michelle Finn
Manufacturing Process:	Foil Stamping, Offset, Microprint
Printer:	Banknote Corporation of America
Press Type:	Gallus RCS
Stamps per Pane:	10
Print Quantity:	30,000,000 stamps
Paper Type:	Phosphor, Block Tag
Adhesive Type:	Pressure-sensitive
Colors:	Cyan, Magenta, Yellow, Black, Silver Kurz Foil
Stamp Orientation:	Horizontal
Image Area (w x h):	1.4200 x 1.0850 in. / 36.0680 x 27.5590 mm
Overall Size (w x h):	1.5600 x 1.2250 in. / 39.6240 x 31.1150 mm
Full Pane Size (w x h):	4.2600 x 7.6900 in. / 108.2040 x 195.3260 mm
Plate Size:	90 stamps per revolution
Plate Numbers:	"B" followed by four (4) single digits
Marginal Markings:	
Front:	Plate Block Numbers in two corners of the pane
Back:	© 2023 USPS • USPS logo • 10 barcodes (121800) • Plate position diagram (9) • Promotional text

— Stamp Services,
Marketing, 3-21-24

Pictorial Postmarks Announcement

As a community service, the Postal Service™ offers pictorial postmarks to commemorate local events celebrated in communities throughout the nation. A list of events for which pictorial postmarks are authorized appears on the following pages. The sponsor of the pictorial postmark appears in italics under the date. Also provided are illustrations of these postmarks.

People attending these local events may obtain the postmark in person at the temporary Post Office™ station established there. Those who cannot attend the event but who wish to obtain the postmark may submit a mail order request. Pictorial postmarks are available only for the dates indicated, and *requests must be postmarked no later than 30 days following the requested pictorial postmark date.*

All requests must include a stamped envelope or postcard bearing at least the minimum First-Class Mail® postage. Items submitted for postmark may not include

postage issued after the date of the requested postmark. Such items will be returned unserved.

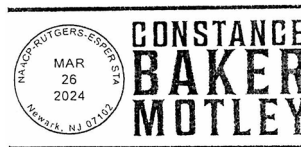
Customers wishing to obtain a postmark must affix stamps to any envelope or postcard of their choice, address the envelope or postcard to themselves or others, insert a card of postcard thickness in envelopes for sturdiness, and tuck in the flap. Place the envelope or postcard in a larger envelope and address it to: Pictorial Postmarks, followed by the Name of the Station, Address, City, State, ZIP+4® Code, as listed next to the postmark.

Customers can also send stamped envelopes and postcards without addresses for postmark, as long as they supply a larger envelope with adequate postage and their return address. After applying the pictorial postmark, the Postal Service returns the items (with or without addresses) under addressed protective cover.

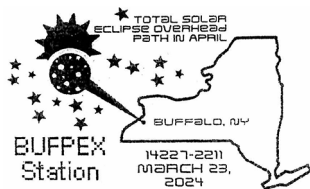


Eads Bridge Station St. Louis, MO 63134

March 22, 2024
St. Louis Stamp Exposition
 Eads Bridge Station
 Pictorial Postmarks
 1720 Market Street,
 Room 1015-A
 Saint Louis, MO 63155



March 26, 2024
ESPER Stamp Society
 NAACP-RUTGERS-ESPER
 Station
 Postmaster
 2 Federal Square
 Newark, NJ 07102



March 23-24, 2024
The Buffalo Stamp Club
 BUFPEX Station
 Postmaster
 1200 William Street,
 Room 200
 Buffalo, NY 14240-9998

— Stamp Services,
 Marketing, 3-21-24

How to Order the First-Day-of-Issue Digital Color or Traditional Postmarks

Customers have 120 days to obtain the first-day-of-issue postmarks by mail. Each cover must have sufficient postage to meet First-Class Mail® requirements. Customers may purchase new stamps at their local Post Office™, by phone at 844-737-7826, or on The Postal Store® website at usps.com/shop.

Digital Color Postmarks

Only select stamp issues offer a digital color postmark. Customers may submit #6 or #10 envelopes constructed of paper rated as “laser safe.” The Postal Service™ recommends envelopes of 80-pound Accent Opaque, acid-free, 9/16-inch side seams with no glue on the flap. The maximum size of all digital color postmarks is 2 inches (vertically) by 4 inches (horizontally). Allow sufficient space on the envelope to accommodate the postmark. Do not use self-adhesive labels for addresses on the envelope. Two test envelopes must be included. There is a minimum of 10 envelopes at 50 cents per postmark required at the time of servicing. Customers must submit a check, money order, or credit card for payment.

The Postal Service reserves the right to not accept hand-painted and other cachet envelopes that are not compatible with our digital color postmark equipment. The Postal Service also reserves the right to substitute traditional black rubber postmarks if use of nonspecified envelopes results in poor image quality or damage to equipment.

Customers must affix the stamps to the envelopes and address them to themselves or others for return through the mail. Or, they may include an additional self-addressed return envelope, large enough to accommodate their canceled items, with sufficient postage affixed for return of

their postmarked items. Address customer requests for digital color postmarks to:

FDOI – (Name of Stamp Issue)
USPS Stamp Fulfillment Services
8300 NE Underground Drive, Suite 300
Kansas City, MO 64144-9900

After applying the first-day-of-issue postmark, the Postal Service will return the envelopes to the customer by U.S. Mail®.

Traditional Postmarks

Customers must affix the stamps to the envelopes and address them to themselves or others for return through the mail. Or, they may include an additional self-addressed return envelope, large enough to accommodate their canceled items, with sufficient postage affixed for return of their postmarked items. Address customer requests for traditional postmarks to:

FDOI – (Name of Stamp Issue)
USPS Stamp Fulfillment Services
8300 NE Underground Drive, Suite 300
Kansas City, MO 64144-9900

After applying the first-day-of-issue postmark, the Postal Service will return the envelopes to the customer by U.S. Mail. There is no charge for the first 50 postmarks. There is a 5-cent charge for each additional postmark over 50. Customers must submit a check, money order, or credit card for payment.

Locally produced items are not authorized. Only merchandise that has been approved and assigned an item number by Headquarters Retail Marketing may be produced and sold.

FIRST DAY OF ISSUE



Digital Color Pictorial

FDOI – Love 2024 Stamp

USPS Stamp Fulfillment Services
8300 NE Underground Drive, Suite 300
Kansas City, MO 64144-9900

May 12, 2024

FIRST DAY OF ISSUE
JANUARY 12, 2024
ROMANCE, AR 72136



Black and White Pictorial

FDOI – Love 2024 Stamp

USPS Stamp Fulfillment Services
8300 NE Underground Drive, Suite 300
Kansas City, MO 64144-9900

May 12, 2024

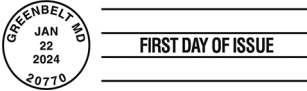


FDOI – Pillars of Creation Stamp

USPS Stamp Fulfillment Services
8300 NE Underground Drive, Suite 300
Kansas City, MO 64144-9900

May 22, 2024

Digital Color Pictorial

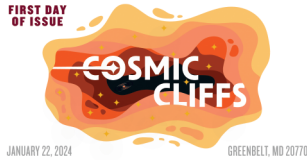


FDOI – Pillars of Creation Stamp

USPS Stamp Fulfillment Services
8300 NE Underground Drive, Suite 300
Kansas City, MO 64144-9900

May 22, 2024

Black and White Pictorial

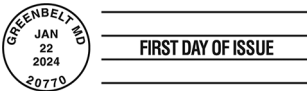


FDOI – Cosmic Cliffs Stamp

USPS Stamp Fulfillment Services
8300 NE Underground Drive, Suite 300
Kansas City, MO 64144-9900

May 22, 2024

Digital Color Pictorial



FDOI – Cosmic Cliffs Stamp

USPS Stamp Fulfillment Services
8300 NE Underground Drive, Suite 300
Kansas City, MO 64144-9900

May 22, 2024

Black and White Pictorial



FDOI – Lunar New Year: Year of the Dragon Stamp

USPS Stamp Fulfillment Services
8300 NE Underground Drive, Suite 300
Kansas City, MO 64144-9900

May 25, 2024

Digital Color Pictorial



FDOI – Lunar New Year: Year of the Dragon Stamp

USPS Stamp Fulfillment Services
8300 NE Underground Drive, Suite 300
Kansas City, MO 64144-9900

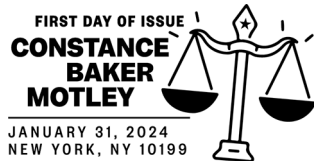
May 25, 2024

Black and White Pictorial

**FDOI – Constance Baker Motley Stamp**

USPS Stamp Fulfillment Services
8300 NE Underground Drive, Suite 300
Kansas City, MO 64144-9900

May 31, 2024

Digital Color Pictorial**FDOI – Constance Baker Motley Stamp**

USPS Stamp Fulfillment Services
8300 NE Underground Drive, Suite 300
Kansas City, MO 64144-9900

May 31, 2024

Black and White Pictorial**FDOI – Saul Bellow Stamp**

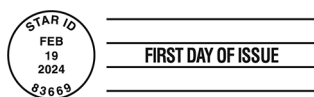
USPS Stamp Fulfillment Services
8300 NE Underground Drive, Suite 300
Kansas City, MO 64144-9900

June 6, 2024

Digital Color Pictorial**FDOI – Saul Bellow Stamp**

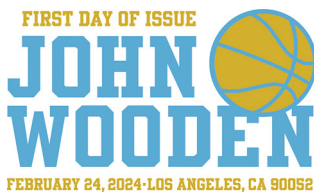
USPS Stamp Fulfillment Services
8300 NE Underground Drive, Suite 300
Kansas City, MO 64144-9900

June 6, 2024

Black and White Pictorial**FDOI – Radiant Star Stamp**

USPS Stamp Fulfillment Services
8300 NE Underground Drive, Suite 300
Kansas City, MO 64144-9900

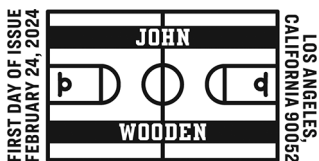
June 19, 2024

Black and White Pictorial**FDOI – John Wooden Stamp**

USPS Stamp Fulfillment Services
8300 NE Underground Drive, Suite 300
Kansas City, MO 64144-9900

June 24, 2024

Digital Color Pictorial



FDOI – John Wooden Stamp
 USPS Stamp Fulfillment Services
 8300 NE Underground Drive, Suite 300
 Kansas City, MO 64144-9900
 June 24, 2024

Black and White Pictorial



FDOI – The Underground Railroad Stamps
 USPS Stamp Fulfillment Services
 8300 NE Underground Drive, Suite 300
 Kansas City, MO 64144-9900
 July 9, 2024

Digital Color Pictorial



FDOI – The Underground Railroad Stamps
 USPS Stamp Fulfillment Services
 8300 NE Underground Drive, Suite 300
 Kansas City, MO 64144-9900
 July 9, 2024

Black and White Pictorial



FDOI – Bluegrass Stamp
 USPS Stamp Fulfillment Services
 8300 NE Underground Drive, Suite 300
 Kansas City, MO 64144-9900
 July 15, 2024

Digital Color Pictorial



FDOI – Bluegrass Stamp
 USPS Stamp Fulfillment Services
 8300 NE Underground Drive, Suite 300
 Kansas City, MO 64144-9900
 July 15, 2024

Black and White Pictorial



FDOI – Garden Delights Stamps
 USPS Stamp Fulfillment Services
 8300 NE Underground Drive, Suite 300
 Kansas City, MO 64144-9900
 July 16, 2024

Digital Color Pictorial



FIRST DAY OF ISSUE

FDOI – Garden Delights Stamps

USPS Stamp Fulfillment Services
8300 NE Underground Drive, Suite 300
Kansas City, MO 64144-9900

July 16, 2024

Black and White Pictorial



FDOI – Celebration Blooms Stamp

USPS Stamp Fulfillment Services
8300 NE Underground Drive, Suite 300
Kansas City, MO 64144-9900

July 22, 2024

Digital Color Pictorial



FIRST DAY OF ISSUE

FDOI – Celebration Blooms Stamp

USPS Stamp Fulfillment Services
8300 NE Underground Drive, Suite 300
Kansas City, MO 64144-9900

July 22, 2024

Black and White Pictorial



FDOI – Wedding Blooms Stamp

USPS Stamp Fulfillment Services
8300 NE Underground Drive, Suite 300
Kansas City, MO 64144-9900

July 22, 2024

Digital Color Pictorial



FIRST DAY OF ISSUE

FDOI – Wedding Blooms Stamp

USPS Stamp Fulfillment Services
8300 NE Underground Drive, Suite 300
Kansas City, MO 64144-9900

July 22, 2024

Black and White Pictorial



FDOI – Save Manatees Stamp

USPS Stamp Fulfillment Services
8300 NE Underground Drive, Suite 300
Kansas City, MO 64144-9900

July 27, 2024

Digital Color Pictorial



FIRST DAY OF ISSUE

FDOI – Save Manatees Stamp

USPS Stamp Fulfillment Services
8300 NE Underground Drive, Suite 300
Kansas City, MO 64144-9900

July 27, 2024

Black and White Pictorial

FIRST DAY OF ISSUE



APRIL 5, 2024 – RANCHO MIRAGE, CA 92270

FDOI – Betty Ford Stamp

USPS Stamp Fulfillment Services
8300 NE Underground Drive, Suite 300
Kansas City, MO 64144-9900

August 5, 2024

Digital Color Pictorial

FIRST DAY OF ISSUE



APRIL 5, 2024 – RANCHO MIRAGE, CA 92270

FDOI – Betty Ford Stamp

USPS Stamp Fulfillment Services
8300 NE Underground Drive, Suite 300
Kansas City, MO 64144-9900

August 5, 2024

Black and White Pictorial



April 26, 2024 · Burlingame, CA 94010

FDOI – Floral Geometry Stamp

USPS Stamp Fulfillment Services
8300 NE Underground Drive, Suite 300
Kansas City, MO 64144-9900

August 26, 2024

Digital Color Pictorial



FIRST DAY OF ISSUE

FDOI – Floral Geometry Stamp

USPS Stamp Fulfillment Services
8300 NE Underground Drive, Suite 300
Kansas City, MO 64144-9900

August 26, 2024

Black and White Pictorial



475 L'ENFANT PLAZA SW
WASHINGTON DC 20260-5540

First-Class Mail
Postage & Fees Paid
USPS
Permit No. G-10

Celebrate with
Lunar New Year • Year of the Dragon
Forever® Stamps



ON SALE JANUARY 25, 2024

